

assortment informations new products

01.2021 EN

Tools. Next Level.



TRGOSTAL - LUBENJAK d.o.o.

Kovinska 4a, 10090 Zagreb (Ured i skladište)
Tel. +385 1 3777964 · +385 1 3777965
www.trgostal-lubenjak.hr · info@trgostal-lubenjak.hr

Brütsch/Rüegger Tools Ltd.

Heinrich Stutz-Strasse 20 · P.O. Box · 8902 Urdorf · Switzerland
Tel. +41 44 736 63 63 · Fax +41 44 736 63 00
www.brw.ch · info@brw.ch

115354 External micrometer digital MAHR Micromar 40 EWR-R/EWRi-R

anvil spherical

DIN 863-3

Digital micrometer Micromar 40 EWR-R /EWRi-R with spherical anvil. For measuring the thickness of pipe walls.



Designs:

115354.0100...115354.0200: Type EWR-R Data output MarConnect (bi-directional) USB, Digimatic

115354.1100...115354.1200: Type EWRi-R Integrated wireless

Features:

- LCD display
- REFERENCE-system
- RESET (sets display to zero)
- TOL (tolerance and warning limits)
- HOLD (storage of measured values)
- Conversion mm/inch
- ABS (switch between relative/absolute mode)
- LOCK-Funktion (Keylock)
- ORIGIN (fixed value setting)
- DATA (data transmission)

Package contents:

Delivered in case incl. setting gauge (from 25 mm).

Appropriate accessories:

109275 Accessories MAHR

Appropriate batteries:

1 pieces 155051.0545 - CR2032 / 3.0 V (included in scope of delivery).

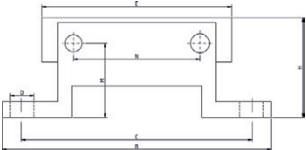
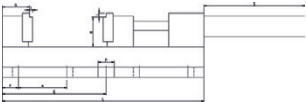
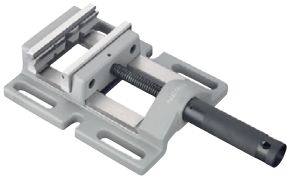
| Order ID | | 115354.0100 | 115354.0200 | 115354.1100 | 115354.1200 |
|---------------------|----|-------------|-------------|-------------|-------------|
| Type | | EWR-R | EWR-R | EWRi-R | EWRi-R |
| Range | mm | 0...25 | 25...50 | 0...25 | 25...50 |
| Resolution | mm | 0.001 | 0.001 | 0.001 | 0.001 |
| Accuracy | µm | 4 | 4 | 4 | 4 |
| Measuring spindle Ø | mm | 6.5 | 6.5 | 6.5 | 6.5 |
| Measuring surfaces | mm | R 6 | R 6 | R 6 | R 6 |
| Spindle pitch | mm | 0.5 | 0.5 | 0.5 | 0.5 |
| Protection class | | IP65 | IP65 | IP65 | IP65 |
| Digit height | mm | 10 | 10 | 10 | 10 |
| Data output | | • | • | • | • |

410101 V-block drilling machine vice NERIOX

Simple design, cast base body, with universal mounting fixture, movable jaw guided laterally, fixed jaw with V-blocks, both clamping jaws with offset.

NERIOX

| Order ID | | 410101.0100 | 410101.0200 | 410101.0300 |
|----------------|----|-------------|-------------|-------------|
| Jaw width | mm | 80 | 100 | 120 |
| Jaw height | mm | 30 | 30 | 30 |
| Clamping width | mm | 65 | 87 | 112 |
| A | mm | 30 | 36 | 48 |
| B | mm | 142 | 154 | 175 |
| C | mm | 110 | 122 | 145 |
| D | mm | 15 | 15 | 15 |
| E | mm | 80 | 100 | 120 |
| F | mm | 21 | 21 | 16 |
| G | mm | 74.5 | 88 | 107 |
| H | mm | 58 | 62 | 65 |
| I | mm | 3.5 | 3.5 | 3.5 |
| J | mm | 8 | 8 | 8 |
| K | mm | 22 | 22 | 28 |
| L | mm | 149 | 174 | 215 |
| M | mm | 40 | 44 | 46 |
| N | mm | 40 | 50 | 80 |
| P | mm | 15 | 15 | 15 |
| Q | mm | 33 | 28 | 30 |
| S | mm | 82 | 10 | 120 |
| Weight | kg | 3.6 | 4.3 | 6.3 |

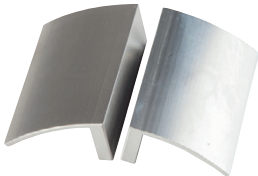


413882 Vice jaws

of aluminium, per pair.

Usable with:

- 413640 Workbench vice NERIOX
- 413680 Workbench vice LEINEN
- 413690 Workbench vice LEINEN JUNIOR
- 413695 Workbench vice LEINEN
- 413850 Workbench vice NERIOX
- 413970 Workbench vice FUTURO



| Order ID | Jaw width |
|-------------|-----------|
| | mm |
| 413882.0100 | 80 |
| 413882.0200 | 100 |
| 413882.0300 | 125 |
| 413882.0400 | 135 |
| 413882.0500 | 150 |
| 413882.0600 | 160 |

424035 Hex L key FUTURO SmartHEX



Chrome-molybdenum vanadium steel, chrome-plated, ends deburred, **long design with hexagon ball head and magnet on the long end**. For socket head screws. This nifty L key is a problem-solver for all kinds of applications; the special SmartHEX hexagon profile protects socket head screws from being rounded out and **holding the key at an angle loosens stripped and rusted hexagon screws** effortlessly without having to compromise on tightening torque.

| Order ID | Wrench size | Side length |
|-------------|-------------|-------------|
| | mm | mm |
| 424035.0100 | 1.5 | 62 x 14 |
| 424035.0200 | 2 | 75 x 16 |
| 424035.0300 | 2.5 | 85 x 18 |
| 424035.0400 | 3 | 90 x 20 |
| 424035.0500 | 4 | 100 x 25 |
| 424035.0600 | 5 | 115 x 28 |
| 424035.0700 | 6 | 135 x 32 |
| 424035.0800 | 8 | 150 x 36 |
| 424035.0900 | 10 | 170 x 40 |

FUTURO



424045 Hex L key set FUTURO SmartHEX



9 pieces, chrome-molybdenum vanadium steel, chrome-plated, ends deburred, **long design with hexagon ball head and magnet on the long end**. For socket head screws. This nifty L key is a problem-solver for all kinds of applications; the special SmartHEX hexagon profile protects socket head screws from being rounded out and **holding the key at an angle loosens stripped and rusted hexagon screws** effortlessly without having to compromise on tightening torque. In plastic holder.

| Order ID | Number of wrenches | with wrenches |
|-------------|--------------------|------------------------|
| | | mm |
| 424045.0100 | 9 | 1.5 2 2.5 3 4 5 6 8 10 |

FUTURO



424270 Hex L key PB Swiss Tools



PB 2222 L, long design, hexagon ball head on the long end, **extra short key part with half ball head** for high torques and versatile application, **angled 90-100°** to provide safe hand clearance when working on screws in particularly confined spaces.

| Order ID | Wrench size | Side length |
|-------------|-------------|-------------|
| | mm | mm |
| 424270.0100 | 1.5 | 80 x 4 |
| 424270.0200 | 2 | 90 x 5 |
| 424270.0300 | 2.5 | 110 x 6 |
| 424270.0400 | 3 | 125 x 8 |
| 424270.0500 | 4 | 150 x 9 |
| 424270.0600 | 5 | 165 x 11 |
| 424270.0700 | 6 | 185 x 13 |
| 424270.0800 | 8 | 200 x 16 |
| 424270.0900 | 10 | 220 x 18 |



424275 Coloured angled hex key PB Swiss Tools



PB 2222 L RB, long design, powder coated with colour-coded sizes. Hexagon ball head on the long end, **extra short key part with half ball head** for high torques and versatile application, **angled 90-100°** to provide safe hand clearance when working on screws in particularly confined spaces.

| Order ID | Wrench size | Side length | Colour |
|-------------|-------------|-------------|--------------|
| | mm | mm | |
| 424275.0100 | 1.5 | 80 x 4 | Light green |
| 424275.0200 | 2 | 90 x 5 | Green |
| 424275.0300 | 2.5 | 110 x 6 | Lime green |
| 424275.0400 | 3 | 125 x 8 | Light yellow |
| 424275.0500 | 4 | 150 x 9 | Yellow |
| 424275.0600 | 5 | 165 x 11 | Orange |
| 424275.0700 | 6 | 185 x 13 | Red |
| 424275.0800 | 8 | 200 x 16 | Purple |
| 424275.0900 | 10 | 220 x 18 | Blue |



424440 Coloured angled hex key set PB Swiss Tools



PB 2222 LH RB, long design, powder coated **with colour-coded sizes**. **Hexagon ball head** on the long end, **extra short key part with half ball head** for high torques and flexible application, **angled 90-100°** to provide safe hand clearance when working on screws in particularly confined spaces, provided in plastic holder.

| Order ID | Type | Version | with wrenches mm |
|-------------|---------------|---------|------------------------|
| 424440.0100 | 2222 LH-10 RB | Long | 1.5 2 2.5 3 4 5 6 8 10 |



425183 L key for TORX® screws PB Swiss Tools

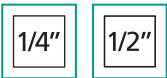


PB 3411, long design, special spring steel alloy for a high hardness grade yet exceptional elasticity. Precise, true-to-size tips for optimum fit in screws, **knurled shaft for a secure grip in wet or oily conditions**, for TORX®screws.

| Order ID | Size | Side length mm |
|-------------|------|-------------------|
| 425183.0100 | T 6 | 80 x 15 |
| 425183.0200 | T 7 | 90 x 16 |
| 425183.0300 | T 8 | 100 x 17 |
| 425183.0400 | T 9 | 110 x 17 |
| 425183.0500 | T 10 | 120 x 18 |
| 425183.0600 | T 15 | 135 x 20 |
| 425183.0700 | T 20 | 150 x 21 |
| 425183.0800 | T 25 | 165 x 22 |



428862 Tool case JET



Y-136C, 136-piece quality tool set in a solid aluminium tool case with a two-tone, rigid foam insert in the bottom for a perfect fit and organisation of tools.

Consisting of:

- 1/4" hexagonal socket set 4–14 mm
- 1/2" hexagonal socket set 10–32 mm
- 9 combination wrenches 8–22 mm
- 1 adjustable wrench 250 mm
- 1 bit set 1/4", 41 bits
- 1 pincers 250 mm
- 1 pointed-tip pliers 200 mm, 1 water pump pliers 250 mm
- 1 diagonal cutters 160 mm, 1 combination pliers 185 mm
- 1 all-purpose scissors, 1 hex key set 1.5–10 mm
- 1 circlip pliers set 4-piece
- 1 universal knife 18 mm, 1 voltage detector 100–250 V
- 1 cross pein hammer 300 g, 1 metal saw bow 300 mm
- 1 metal saw 300 mm, 1 LED torch (without batteries)
- 1 telescopic magnet, 1 5-piece chisel and punch set
- 1 4-piece precision screwdriver set
- 1 5-piece screwdriver set, 1 bit holder
- 1 tape measure 5 m, 1 calliper gauge 150 mm
- 1 knee cushion, 400 x 300 mm



| Order ID | Type | Parts | Dimensions mm | Weight kg |
|-------------|--------|-------|------------------|--------------|
| 428862.0100 | Y-136C | 136 | 510 x 200 x 430 | 12.8 |

434525 Watchmaker's screwdriver set NERIOX



6 pieces, for **Phillips and slotted machine screws**, blade black tool steel, handles nickel-plated, in plastic case.

| Order ID | Parts | Slot width mm | Phillips |
|-------------|-------|------------------|----------|
| 434525.0100 | 6 | 1.4 2.0 2.4 3.0 | PH0 PH1 |

NERIOX



438250 Bit set BAHCO



Bahco 59S/22-2, 22 pieces, in a robust rubber holder with belt clip and safety lock to prevent it opening independently, with 20 short bits 1/4" C 6.3, 1 magnetic bit holder 1/4" and 1 square/hexagonal plug-in adapter 1/4". Bits made of high-performance high-speed steel, zinc-phosphated.



| | |
|-----------------------|---------------------------------|
| Order ID | 438250.0100 |
| Type | 59S/22-2 |
| Parts | 22 |
| Holder with magnet | 1/4" x 60 mm |
| Coupler | Square/hexagonal (1/4") |
| Phillips blades No. | 3 x PH2 2 x PH2G |
| Pozidriv blades No. | 2 x PZ2 1 x PZ3 |
| Hexagon socket bits | 1 x 2.5 1 x 3 |
| Bits for TORX® screws | 2 x T10 3 x T15 3 x T20 2 x T25 |

438255 Bit set BAHCO



Bahco 59/S31B, 31 pieces, in a plastic box, with 29 short bits 1/4" C 6.3, 1 quick-change magnetic bit holder 1/4" and 1 square/hexagonal plug-in adapter 1/4". Bits made of high-performance high-speed steel, sandblasted and treated with oil to protect against corrosion.



| | |
|-----------------------|---|
| Order ID | 438255.0100 |
| Type | 59/S31B |
| Parts | 31 |
| Holder with magnet | 1/4" x 60 mm |
| Coupler | Square/hexagonal (1/4") |
| for Slotted screws | 1 x 4.5 mm 1 x 5.5 |
| Phillips blades No. | 1 x PH1 3 x PH2 1 x PH3 2 x PH2G |
| Pozidriv blades No. | 1 x PZ1 3 x PZ2 1 x PZ3 |
| Hexagon socket bits | 1 x 3 1 x 4 1 x 5 1 x 6 |
| Bits for TORX® screws | 1 x T10 3 x T15 3 x T20 2 x T25 1 x T27 1 x T30 |

438260 Bit set BAHCO



Bahco 59/S54BC, 54 pieces, in a robust plastic box with rubberised applications, with 46 short bits 1/4" C 6.3, 7 long bits 1/4" E 6.3, 1 magnetic bit holder 1/4", 1 quick-change magnetic bit holder 1/4" and 1 square/hexagonal plug-in adapter 1/4". Bits made of high-performance high-speed steel, sandblasted and treated with oil to protect against corrosion.



| | |
|-----------------------------------|---|
| Order ID | 438260.0100 |
| Type | 59/S54BC |
| Parts | 54 |
| Holder with magnet | 2 x 1/4" x 60 mm |
| Coupler | 4-Kant/6-Kant (1/4") |
| for Slotted screws | 1 x 4.5 1 x 5.5 |
| Phillips blades No. | 1 x PH1 4 x PH2 1 x PH3 2 x PH2G |
| Phillips bits long | 1 x PH1 1 x PH2 |
| Pozidriv blades No. | 1 x PZ1 4 x PZ2 1 x PZ3 |
| Pozidriv bits long | 1 x PZ1 1 x PZ2 |
| Hexagon socket bits | 1 x 3 1 x 4 1 x 5 1 x 6 1 x 8 |
| Inside square bits | 1 x 1 1 x 2 |
| Bits for TORX® screws | 2 x T10 2 x T15 4 x T20 2 x T25 1 x T27 4 x T30 1 x T40 |
| Long bits for TORX® screws | 1 x T20 1 x T25 1 x T30 |
| Blades with hole for TORX® screws | 1 x TR10 1 x TR15 1 x TR20 1 x TR25 1 x TR30 |

438265 Bit set BAHCO



Bahco 59/S100BC, 100 pieces, in a robust plastic box with rubberised applications, with 97 short bits 1/4" C 6.3, 1 magnetic bit holder 1/4", 1 quick-change magnetic bit holder 1/4" and 1 square/hexagonal plug-in adapter 1/4". Bits made of high-performance high-speed steel, sandblasted and treated with oil to protect against corrosion.



| | | |
|-----------------------------------|---|--|
| Order ID | 438265.0100 | |
| Type | 59/S100BC | |
| Parts | 100 | |
| Holder with magnet | 2 x 1/4" x 60 mm | |
| Coupler for Slotted screws | 4-Kant/6-Kant (1/4") | |
| Phillips blades No. | 1 x 4.5 mm 1 x 5.5 | |
| Pozidriv blades No. | 2 x PH1 9 x PH2 1 x PH3 5 x PH2G | |
| Hexagon socket bits | 2 x PZ1 9 x PZ2 1 x PZ3 | |
| Inside square bits | 1 x 3 3 x 4 1 x 5 3 x 6 1 x 8 | |
| Bits for TORX® screws | 1 x 1 1 x 2 | |
| Blades with hole for TORX® screws | 3 x T10 5 x T15 15 x T20 8 x T25 1 x T27 15 x T30 3 x T40 | |
| | 1 x TR10 1 x TR15 1 x TR20 1 x TR25 1 x TR30 | |

438270 Bit set BAHCO



Bahco 65I/7-1, 7 pieces, in a plastic box, **with 6 short stainless steel bits** 1/4" C 6.3 and 1 universal bit holder 1/4". Particularly suitable **for use with stainless steel screws**, the torsion zone absorbs torque spikes, avoids premature wear and prolongs the service life.



| | | |
|-----------------------|---------------------------------|--|
| Order ID | 438270.0100 | |
| Type | 65I/7-1 | |
| Parts | 7 | |
| Holder | 1/4" x 60 mm | |
| Phillips blades No. | 1 x PH2 | |
| Pozidriv blades No. | 1 x PZ2 | |
| Bits for TORX® screws | 1 x T15 1 x T20 1 x T25 1 x T30 | |

455910 Universal cutters NERIOX

Stainless steel blades with fine serration and additional cutter for electric cables with a diameter of up to 2.5 mm, variable opening width for small and large hands, spring and safety lock, ergonomic 2-component handle. Effortlessly cuts paper, cardboard, fabric, sheet metal, plastic, leather etc.

NERIOX



| | | |
|-------------|----------------|--------------|
| Order ID | Overall length | Blade length |
| | mm | mm |
| 455910.0100 | 180 | 40 |

457155 MDP safety knife MARTOR

Secunorm Profi 25 MDP, professional safety knife with automatic blade retraction for universal applications and materials; also cuts 3-layer boxes effortlessly. Ideally suited **for use in the food or pharmaceutical industries - metal-detectable**: When working, a cutting tool—or parts of it—can sometimes be lost. But only for a short time because the metal-detectable plastic and the striking blue ensure that you find it again more quickly. The **unpainted handle** also minimises the risk of broken parts being able to enter the production process. Suitable for right-handed and left-handed users, 2-sided, **stainless trapezoidal blade**, push button for easy blade change.



Appropriate accessories:

- 457325 Used blade container MARTOR
- 550095 Belt pouch with clip MARTOR

| | | |
|-------------|-----------------------|---------------|
| Order ID | Type | Cutting depth |
| | | mm |
| 457155.0100 | Secunorm Profi 25 MDP | 21 |

457165 MDP safety knife MARTOR

Secunorm Handy MDP, handy, compact safety knife with automatic blade retraction for a variety of applications and materials. Ideally suited **for use in the food or pharmaceutical industries - metal-detectable**: When working, a cutting tool—or parts of it—can sometimes be lost. But only for a short time because the metal-detectable plastic and the striking blue ensure that you find it again more quickly. The **unpainted handle** also minimises the risk of broken parts being able to enter the production process. Slide on both sides: Suitable for right-handed and left-handed users, 4-sided, **stainless blade**.



Appropriate accessories:

- 457325 Used blade container MARTOR
- 550095 Belt pouch with clip MARTOR

| | | |
|-------------|--------------------|---------------|
| Order ID | Type | Cutting depth |
| | | mm |
| 457165.0100 | Secunorm Handy MDP | 8.5 |

457205 MDP safety knife MARTOR

Secunorm Smartcut MDP, very lightweight safety knife with automatic blade retraction for a variety of applications and materials. Ideally suited **for use in the food or pharmaceutical industries - metal-detectable**: When working, a cutting tool—or parts of it—can sometimes be lost. But only for a short time because the metal-detectable plastic and the striking blue ensure that you find it again more quickly. Slide accessible from both sides, suitable for right-handed and left-handed users, **stainless disposable blade**.



Appropriate accessories:
550095 Belt pouch with clip MARTOR

| Order ID | Type | Cutting depth mm |
|-------------|-----------------------|---------------------|
| 457205.0100 | Secunorm Smartcut MDP | 11.6 |

457215 MDP safety knife MARTOR

Secumax 320 MDP, the film expert with the highest level of safety. The concealed blade and the rounded knife nib protect you and your goods particularly reliably. Ideally suited **for use in the food or pharmaceutical industries - metal-detectable**: When working, a cutting tool—or parts of it—can sometimes be lost. But only for a short time because the metal-detectable plastic and the striking blue ensure that you find it again more quickly. With fastening eyelet and tape cutter, suitable for right-handed and left-handed users, **4-sided , stainless blade**, push button for easy blade change.



Appropriate accessories:
457325 Used blade container MARTOR
550095 Belt pouch with clip MARTOR

| Order ID | Type | Cutting depth mm |
|-------------|-----------------|---------------------|
| 457215.0100 | Secumax 320 MDP | 4 |

457220 MDP safety knife MARTOR

Secumax 145 MDP, lightweight for everyday cutting in cardboard, films or adhesive tapes. Insulated cutting edges for maximum safety and out of reach of fingers. 2-in-1 blade head for grooving and cutting. Ideally suited **for use in the food or pharmaceutical industries - metal-detectable**: When working, a cutting tool—or parts of it—can sometimes be lost. But only for a short time because the metal-detectable plastic and the striking blue ensure that you find it again more quickly. With fastening eyelet, suitable for right-handed and left-handed users, **2-sided , stainless disposable blade**.



Appropriate accessories:
550095 Belt pouch with clip MARTOR

| Order ID | Type | Cutting depth mm |
|-------------|-----------------|---------------------|
| 457220.0100 | Secumax 145 MDP | 3.8 |

457235 MDP ring cutter MARTOR

Secumax ring cutter MDP, work with a cutting tool – and still have both hands free for other things. The ring cutter makes it easy to cut films, yarns, strings and much more. Flexible plastic ring, suitable for all finger sizes. Ideally suited **for use in the food or pharmaceutical industries - metal-detectable**: When working, a cutting tool—or parts of it—can sometimes be lost. But only for a short time because the metal-detectable plastic and the striking blue ensure that you find it again more quickly. **Stainless disposable blade**.



| Order ID | Type | Cutting depth mm |
|-------------|------------------------|---------------------|
| 457235.0100 | Secumax Ringmesser MDP | 5.6 |

459865 Hole saw set BAHCO

Bahco Sandflex® 3834-64 Metal & Wood, with the most common hole saws **for universal applications in an industrial and electrical setting**. Universal hole saws for cutting ferrous and non-ferrous steels, cast iron, aluminium, brass, copper, stainless steel, wood and plastics. Bi-metal design with 8% cobalt for high wear resistance, side slots enable cores to be removed quickly and easily. Suitable for use with electric drilling machines, both stationary and portable. Cutting depth 38 mm.



| | |
|-------------|---|
| Order ID | 459865.0100 |
| Type | 3834-SET-64 |
| Ø | 19 22 29 35 38 44 51 57 64 |
| Accessories | 1 arbor 3834-ARBR-930 for Ø 14–30 mm 1 arbor 3834-ARBR-9100 for Ø 32–100 mm 1 HSS centre drill 3834-DRL |

488080 Cut-off wheel high performance FUTURO



Straight version (form 41), abrasive corundum A, **very well suited for structural steel, hardened, high-alloy and high-tensile steel and stainless steel**. For cutting sheet metal, profiles and solid material. Powerful cut-off wheel with a extremely long service life and high cutting performance with free-hand angle grinders of all power classes. Less burr formation and fewer flying sparks. Iron and sulphur-free, specially protected against moisture-related ageing processes.

Sales unit = pack of 25

| Order ID | Ø x width mm | Hole mm |
|-------------|-----------------|------------|
| 488080.0100 | 115 x 1.0 | 22.23 |
| 488080.0200 | 125 x 1.0 | 22.23 |
| 488080.0300 | 230 x 1.9 | 22.23 |

FUTURO



488095 Cut-off wheel NERIOX



Straight version (form 41), abrasive corundum A, **well suited for structural steel, hardened, high-alloy and high-tensile steel and stainless steel**. For cutting sheet metal, profiles and solid material. Efficient cut-off wheel with a good service life and cutting performance. **Ideal for low-drive free-hand angle grinders**. Less burr formation and fewer flying sparks. Iron and sulphur-free.

Sales unit = pack of 25

| Order ID | Ø x width mm | Hole mm |
|-------------|-----------------|------------|
| 488095.0100 | 125 x 1.0 | 22.23 |

NERIOX



489100 Abrasive flap wheel high performance Z FUTURO



Flat design, abrasives made of sharp-edged, self-sharpening zircon corundum, **very well suited for steel, suitable for stainless steel**. Tool for universal grinding tasks such as surface grinding and welding seam processing with a very high service life and a maximum amount of stock removal. Iron and sulphur-free.

Sales unit = pack of 10

| Order ID | Ø mm | Grain | Hole mm |
|-------------|---------|-------|------------|
| 489100.0100 | 115 | 40 | 22.23 |
| 489100.0200 | 115 | 60 | 22.23 |
| 489100.0300 | 115 | 80 | 22.23 |
| 489100.0400 | 125 | 40 | 22.23 |
| 489100.0500 | 125 | 60 | 22.23 |
| 489100.0600 | 125 | 80 | 22.23 |

FUTURO



489110 Abrasive flap wheel high performance C FUTURO



Conical design, abrasives made of **microcrystalline, sharp-edged ceramic grain**. Fast and aggressive grinding with very high cutting performance and also a greater contact surface due to extra long slats. **Very well suited for tempered steels, pawl surfaces and titanium**, especially good for edge grinding. Iron and sulphur-free.

Sales unit = pack of 10

| Order ID | Ø mm | Grain | Hole mm |
|-------------|---------|-------|------------|
| 489110.0100 | 125 | 40 | 22.23 |
| 489110.0200 | 125 | 60 | 22.23 |
| 489110.0300 | 125 | 80 | 22.23 |

FUTURO

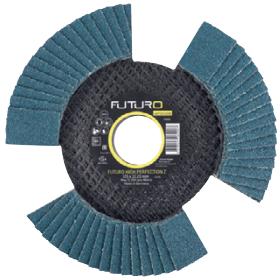


489120 Abrasive flap wheel High Perfection Z FUTURO



Conical design, simple grinding **with full visibility**. Thanks to the three recesses, the abrasive flap wheel becomes transparent when turning. This enables **permanent control of the material removal** and therefore a perfect result. Abrasives made of sharp-edged, self-sharpening zircon corundum, **very well suited for steel, suitable for stainless steel**. Tool for universal grinding tasks such as surface grinding and welding seam processing with a very high service life and a maximum amount of stock removal. Iron and sulphur-free.

FUTURO



Sales unit = **pack of 10**

| Order ID | Ø mm | Grain | Hole mm |
|-------------|---------|-------|------------|
| 489120.0100 | 125 | 40 | 22.23 |
| 489120.0200 | 125 | 60 | 22.23 |
| 489120.0300 | 125 | 80 | 22.23 |

517155 Epoxy adhesive LOCTITE

LOCTITE EA 9483

Highly transparent, flowable, universal 2K epoxy adhesive **for bonding and casting for applications requiring optical transparency and high strength**. The product is, for example, ideally suited for gluing decorative panels and display boxes. It has a low moisture absorption, hardens at room temperature and achieves excellent impact resistance. Absolute dimensional stability over a wide temperature range, resistant to a variety of chemicals and solvents.



Appropriate accessories:

517160 Caulking gun LOCTITE
517162 Static mixer LOCTITE

| | | |
|------------------------------|---|--------------------|
| Order ID | 517155.0100 | |
| Cartridge | ml | 50 |
| Type | | 9483 |
| Mischverhältnis | | 2:1 |
| Preparation time | min | 30 |
| Initial curing time at 22 °C | min | 210 |
| Joint max. | mm | 0.25 |
| Viscosity | mPa·s | 7000 |
| Operating temperature | °C | -55...+150 |
| Colour of the product | | Highly transparent |
| Symbols of danger | GHS7, GHS9 | |
| H phrases | H315, H317, H319, H411 | |
| P phrases | P273, P280, P302+P352, P333+P313, P337+P313 | |

523255 Rust remover high performance FUTURO

Rust dissolver and screw releaser with excellent creep effect. Quickly dissolves rusted metal parts, protects against corrosion and displaces moisture. Briefly spray the surface from a distance of around 5–10 cm and leave to take effect. Repeat if necessary.

FUTURO



| Order ID | Contents ml | Packs |
|-------------|----------------|-----------|
| 523255.0100 | 500 | Spray can |

524100 Fast-acting degreaser high performance FUTURO

Ideally suited for effective cleaning in the workshop, it dissolves even the most stubborn residues with great pressure and an impressive cleaning power. Removes oil, grease, tar, adhesive residue, brake fluid, dirt etc. from tools, machines, equipment, metal parts, brakes etc. Cleans spark plugs, battery terminals, electrical connections and contacts. Use only on cold surfaces. Does not attack rubber, plastic and paint, dielectric.

FUTURO



| Order ID | Contents | Packs |
|-------------|----------|-----------|
| 524100.0100 | 500 ml | Spray can |
| 524100.0200 | 5 l | Canister |
| 524100.0300 | 25 l | Canister |

524105 Multi-use foam cleaner high performance FUTURO

The white active foam effectively cleans all smooth surfaces, discs and mirrors in industry, in the home and the office. The special formulation effortlessly removes all kinds of dirt and leaves a pleasant citrus aroma. Thanks to a stable active foam, there is no unwanted drain off on vertical surfaces. Providing long-term protection for longer lasting cleanliness. Also sprays overhead for targeted and easy use even in inaccessible areas. Neutral with regard to rubber, paints and plastics, biodegradable.

| Order ID | Contents ml | Packs |
|-------------|----------------|-----------|
| 524105.0100 | 500 | Spray can |

FUTURO



530191 Nitrile knitted glove MaxiFlex®

Elite™ 34-274



Assembly glove, coated palm, for very intricate work in dry conditions.

DURAtech® technology for **extremely high abrasion resistance**, 30% thinner than standard nitrile foam gloves, AIRtech® technology for maximum breathability, ERGOtech® for maximum comfort.



CE Category II, EN388:2003:4131
Pack of 12 pairs
Price per pair
EN388:4131A

| Order ID | Size |
|-------------|------|
| 530191.0100 | 7 |
| 530191.0200 | 8 |
| 530191.0300 | 9 |
| 530191.0400 | 10 |
| 530191.0500 | 11 |

533027 Hygiene mask type IIR

Surgical face mask with anti-fog coating and elasticated straps. **Ideal for glasses wearers** as the mask helps prevent the lenses from fogging up. This face mask meets all the criteria of EN 14683. High bacterial filtration efficiency (BFE) ≥ 98%, differential pressure <60 Pa/cm², splash resistance pressure ≥ 16 kPa, microbial cleanliness ≤ 30 cfu/g.

This mask is made up of: **Three layers** consisting of:
Layer 1: Polypropylene spunbond, non-woven fabric
Layer 2: Melt-blown fabric, polypropylene
Layer 3: Polypropylene spunbond, non-woven fabric
Two elasticated straps made from polyester, spandex yarn with low elasticity
One polyethylene or metal nose bridge, anti-fog coating



This medical face mask has been tested in accordance with the EN 14683 NELSON test for bacterial filtration efficiency (BFE), NELSON test for differential pressure, NELSON test for microbial cleanliness, NELSON test for splash resistance pressure. CE certification in accordance with Directive 93/42/EEC, manufactured as a medical device in compliance with the strictest standards.

| Order ID | Contents pieces |
|-------------|--------------------|
| 533027.0100 | 50 |



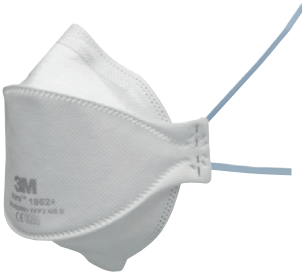
533176 Respirator 3M

Aura™ 1862+

FFP2 NR D, EN 149:2001+A1:2009 Typ II R, EN 14683:2019

Filter class FFP2, the 3M™ Aura™ respirator 1862+ provides effective breathing protection against dust, non-volatile fluid particles and biological aerosols.

Resistant to liquid splashes, sealing points along the top edge of the mask ensure a clear view. This reduces eyewear fogging. The innovative filter technology guarantees minimal breathing resistance while maintaining safe filter performance. The special design of the nose section allows it to conform perfectly to the shape of the face. The chin strap makes it easy to position the mask, while hygienic individual packaging protects the mask from contamination.



Box of 20

| Order ID | Filter class | up to MAK value |
|-------------|--------------|-----------------|
| 533176.0100 | FFP2 | 10x |

534062 Safety shoes S1P REEBOK

Fusion Flexweave blue

Upper made from Ultraknit/Flexweave, **breathable lining** made from nylon mesh, rubber outer sole with very light foam midsole, **extra-wide composite protective cap**, 100% non-metallic.



EN ISO 20345:2011 S1P SRC

| Order ID | Size | Order ID | Size |
|-------------|------|-------------|------|
| 534062.0100 | 39 | 534062.0600 | 44 |
| 534062.0200 | 40 | 534062.0700 | 45 |
| 534062.0300 | 41 | 534062.0800 | 46 |
| 534062.0400 | 42 | 534062.0900 | 47 |
| 534062.0500 | 43 | | |

534064 Safety shoes S1P REEBOK

Fusion Flexweave grey

Upper made from Ultraknit/Flexweave, **breathable lining** made from nylon mesh, rubber outer sole with very light foam midsole, **extra-wide composite protective cap**, 100% non-metallic.



EN ISO 20345:2011 S1P SRC

| Order ID | Size | Order ID | Size |
|-------------|------|-------------|------|
| 534064.0100 | 39 | 534064.0600 | 44 |
| 534064.0200 | 40 | 534064.0700 | 45 |
| 534064.0300 | 41 | 534064.0800 | 46 |
| 534064.0400 | 42 | 534064.0900 | 47 |
| 534064.0500 | 43 | | |

534082 Safety shoes S1P REEBOK

Fusion Flexweave black



Upper made from Ultraknit/Flexweave, **breathable lining** made from nylon mesh, rubber outer sole with very light foam midsole, **extra-wide composite protective cap**, 100% non-metallic, **ESD**.



EN ISO 20345:2011 S1P SRC ESD

| Order ID | Size | Order ID | Size |
|-------------|------|-------------|------|
| 534082.0100 | 36 | 534082.0700 | 42 |
| 534082.0200 | 37 | 534082.0800 | 43 |
| 534082.0300 | 38 | 534082.0900 | 44 |
| 534082.0400 | 39 | 534082.1000 | 45 |
| 534082.0500 | 40 | 534082.1100 | 46 |
| 534082.0600 | 41 | 534082.1200 | 47 |



534273 Safety low shoes S3 REEBOK

Fusion Formidable Low

Black leather upper, breathable and moisture-wicking nylon mesh lining, rubber sole with excellent non-slip properties, **special wide toecap** and composite puncture protection, 100% metal free.



CE category II

EN ISO 20345:2011 S3 SRC

| Order ID | Size | Order ID | Size |
|-------------|------|-------------|------|
| 534273.0100 | 37 | 534273.0700 | 43 |
| 534273.0200 | 38 | 534273.0800 | 44 |
| 534273.0300 | 39 | 534273.0900 | 45 |
| 534273.0400 | 40 | 534273.1000 | 46 |
| 534273.0500 | 41 | 534273.1100 | 47 |
| 534273.0600 | 42 | | |

534377 Safety shoes S3 GARSPORT

Eva Low sw-gold, womens' model

Lightweight yet robust safety shoe for women, upper made from water-repellent microfibre with gold trim, lining is sweat-absorbent, sole consists of three layers (light rubber comfort layer, intermediate polygum layer and a TPU outer sole), **aluminium toe protectors and metal-free anti-perforation protection**.



CE category II

EN ISO 20345:2011 S3

| Order ID | Size | Order ID | Size |
|-------------|------|-------------|------|
| 534377.0100 | 36 | 534377.0500 | 40 |
| 534377.0200 | 37 | 534377.0600 | 41 |
| 534377.0300 | 38 | 534377.0700 | 42 |
| 534377.0400 | 39 | | |

536699 Beret caps Med-Comfort blue

Beret caps, blue, PP, dispenser box of 100

| Order ID | Size |
|-------------|------|
| 536699.0100 | M |



550112 Belt phone holder BAHCO

Bahco 4750-VMFH-1, made of durable 1680 denier polyester, with strap for additional protection on construction sites, **Velcro** fastening for additional security, strap made of Velcro® material for attaching to the belt, can also be used without belt.

| Order ID | Type | Dimensions WxDxH mm |
|-------------|-------------|------------------------|
| 550112.0100 | 4750-VMFH-1 | 100 x 35 x 170 |



550525 Electrician's tool pouch BAHCO

Bahco 4750FB3-12, open tool pouch made of polyester blended fabric **especially for electricians**. Elastic band area for several screwdrivers at the front and side, large central compartment for larger tools or material and large bottom pocket including plastic box for small parts: screws, nuts, washers, clamps. Pockets of different heights on both sides offer additional storage space. Dedicated holders for measuring tape, business cards and phone holders, reinforced, durable handle providing stability and robustness to the bag. Comfortable, padded carrying strap with click adjustment. The 100% waterproof, non-slip hard plastic base is robust and protects against bumps and knocks.

| Order ID | Type | External dimensions (H x B x T) mm | Usable volume l | Maximum load kg |
|-------------|------------|---------------------------------------|--------------------|--------------------|
| 550525.0100 | 4750FB3-12 | 285 x 285 x 190 | 12 | 20 |



550545 Tool bag BAHCO

Bahco 4750FB1-19A, open 19" fabric tool bag made of extremely resistant polyester blended fabric with 100% waterproof and easy-to-clean polypropylene bottom. High storage capacity, adjustable spirit level holder straps, special pocket for handsaws, measuring tape, business cards and telephone holders. Soft, rubberised grip that provides good support and padded carrying strap with click adjustment. Plastic zip for easy handling, even when wearing gloves. Bags, mini bags, elastic bands, inner and outer dividers for various tools.

| Order ID | Type | External dimensions (H x B x T) mm | Usable volume l | Maximum load kg |
|-------------|-------------|---------------------------------------|--------------------|--------------------|
| 550545.0100 | 4750FB1-19A | 355 x 470 x 230 | 32 | 25 |



550555 Tool bag BAHCO

Bahco 4750FB1-19B, 19" fabric tool bag **with closed top** made of extremely resistant polyester blended fabric with 100% waterproof and easy-to-clean polypropylene bottom. High storage capacity, adjustable spirit level holder straps, special pocket for handsaws, measuring tape, business cards and telephone holders. Soft, rubberised grip that provides good support and padded carrying strap with click adjustment. Plastic zip for easy handling, even when wearing gloves. Bags, mini bags, elastic bands, inner and outer dividers for various tools.

| Order ID | Type | External dimensions (H x B x T) mm | Usable volume l | Maximum load kg |
|-------------|-------------|---------------------------------------|--------------------|--------------------|
| 550555.0100 | 4750FB1-19B | 355 x 470 x 230 | 32 | 25 |



550575 Laptop and tool bag BAHCO

Bahco 4750FB4-18, extremely durable fabric tool bag **with central, large and padded compartment for laptops** and equally sensitive items, two side removable compartments with different tool bags and holders for measuring tape, business cards and telephones. 100% waterproof and easy-to-clean polypropylene bottom, padded carrying strap with click adjustment. Plastic zip for easy handling, even when wearing gloves. Comfortable carrying strap and handle.

| Order ID | Type | External dimensions (H x B x T) mm | Usable volume l | Maximum load kg |
|-------------|------------|---------------------------------------|--------------------|--------------------|
| 550575.0100 | 4750FB4-18 | 350 x 430 x 150 | 17 | 20 |



554020 Hydraulic jack BAHCO

Bahco BH45, heat-treated extension screw allows height adjustment, fluted, heat-treated saddle offers wide lifting surface and secure support. CE certified in accordance with 2006/42/EC and BS EN1494.

| Order ID | Type | Carrying capacity t | Lift height mm | Dimensions mm | Weight kg |
|-------------|--------|------------------------|-------------------|------------------|--------------|
| 554020.0100 | BH452 | 2 | 168...316 | 93 x 83 x 180 | 2 |
| 554020.0200 | BH454 | 4 | 188...363 | 100 x 91 x 190 | 2.8 |
| 554020.0300 | BH456 | 6 | 207...402 | 114 x 96 x 215 | 3.7 |
| 554020.0400 | BH458 | 8 | 222...447 | 120 x 103 x 230 | 4.8 |
| 554020.0500 | BH4512 | 12 | 227...457 | 135 x 117 x 235 | 6 |
| 554020.0600 | BH4520 | 20 | 235...445 | 153 x 145 x 240 | 8.6 |



554090 Vehicle jack BAHCO

Bahco BH12000, extra low ground clearance of just 70 mm, double piston enables up to 50% faster lifting, extra large foot pedal and curved handle for a fast, safe and comfortable operation. Polyurethane-coated steel wheels for smooth, quiet use. Piston and spring protected from dust and dirt. Rubber pad protects the car paint from damage and prevents slipping. The lifting rod with protective foam cover protects the vehicle and a safety valve prevents any accidental overloading and a safety release valve for a safe lowering even under full load. CE certified in accordance with 2006/42/EC and BS EN1494.

| Order ID | Type | Carrying capacity t | Lift height mm | Dimensions mm | Weight kg |
|-------------|---------|------------------------|-------------------|------------------|--------------|
| 554090.0100 | BH12000 | 2 | 70...490 | 780 x 364 x 1270 | 42.7 |



554095 Vehicle jack BAHCO

Bahco BH13000, compact vehicle jack with load capacity of 3 tonnes, double piston enables up to 50% faster lifting, extra large foot pedal and curved handle for a fast, safe and comfortable operation. Polyurethane-coated steel wheels for smooth, quiet use. Piston and spring protected from dust and dirt. Rubber pad protects the car paint from damage and prevents slipping. The lifting rod with protective foam cover protects the vehicle and a safety valve prevents any accidental overloading and a safety release valve for a safe lowering even under full load. CE certified in accordance with 2006/42/EC and BS EN1494.

| Order ID | Type | Carrying capacity t | Lift height mm | Dimensions mm | Weight kg |
|-------------|---------|------------------------|-------------------|------------------|--------------|
| 554095.0100 | BH13000 | 3 | 90...550 | 825 x 364 x 1280 | 48.5 |



565648 USB charger BOSCH

Bosch GAA 18V-24, convenient charger for all mobile devices with USB charging connection. Charge your devices with Bosch professional batteries with up to 2.4 amps per charging socket.

| Order ID | Type |
|-------------|------------|
| 565648.0100 | GAA 18V-24 |



565835 Construction site digital radio BOSCH

IP 54

Bosch GPB 18V-2 SC, portable construction site digital radio, extremely flexible with DAB+, Bluetooth®, FM reception and AUX option. Intuitive operation and quick set-up in combination with handle and hook for vertical and horizontal installation. Excellent sound with 2 stereo loudspeakers and passive membranes for better bass reproduction. Mains or battery operation (compatible with all Bosch Professional 18V batteries). Integrated USB port for charging external devices (e.g. smartphones, tablets etc.). Option to connect 2 radios using a smartphone.



Scope of delivery:

565835.0100 DC-in mains adapter, aux cable, CR 2032 lithium coin cell battery, without battery pack, without charger, in case

Appropriate accessories:

565623 Replacement batteries BOSCH
566430 Rechargeable battery starter pack 18 V BOSCH clic & go

| Order ID | 565835.0100 |
|------------------------|-----------------------|
| Type | GPB 18V-2 SC |
| Battery voltage | V 18 |
| Voltage | V 100...240 |
| Frequency | FM / DAB+ |
| Dimensions | mm 347 x 176 x 154 |
| Weight without battery | kg 2.5 |

570818 Saw blade accessories FEIN

FEIN E-Cut Carbide Pro, with Starlock holder. TiN-coated carbide plunge-cut saw blade **with extremely high wear resistance**. 100% longer service life compared to uncoated carbide saw blades. 30 times longer service life compared to HSS saw blades. The right choice for hard materials such as iron metals, stainless steel or copper pipes. Can even be used for hardened screws (Spax) and high-strength machine screws. But also ideally suited for abrasive materials such as brick, masonry or cement fibreboards as well as laminate, CFRP and GFRP. Good cutting performance and cutting quality in all wood materials such as hardwood or particleboard.

| Order ID | Type | Cutting depth mm | Cutting width mm | Holder |
|-------------|------|---------------------|---------------------|---------------|
| 570818.0100 | 236 | 40 | 32 | Starlock |
| 570818.0200 | 237 | 60 | 32 | Starlock Plus |
| 570818.0300 | 238 | 75 | 32 | Starlock Plus |



570818.0100

584020 Edge milling machine FEIN

Fein KFH 17-8 R, universal edge cutter with booster technology for optimal weld seam preparation and for preparing subsequent coatings. High milling performance and significantly reduced vibrations thanks to new booster technology. FEIN ErgoGrip: Unique, patent-pending ergonomics concept with two-hand operation for low-fatigue working. Efficient milling cutter quick change system for minimal interruptions. High abrasion performance with little force. Comprehensive user protection through soft start-up, restart protection, blockage monitoring and electronic overload protection.



Scope of delivery:

584020.0100 Edge milling machine KFH 17-8 R (without milling head, without guide roller, without indexable inserts), 3 clamping screws, 1 copper paste, 1 Allen key 5 mm, 1 screwdriver, plastic tool case
- **Suitable trimming heads, guide rollers and indexable inserts for your application on request.**

| Order ID | 584020.0100 | | |
|----------------|-------------------|-------------|--|
| Type | KFH 17-8 R | | |
| Power output | W | 1000 | |
| Idle speed | min ⁻¹ | 2300...7500 | |
| Chamfer height | mm | 5.7 | |
| Chamfer angle | | 30° / 45° | |
| Radius | mm | 3 | |
| Cable length | m | 4 | |
| Weight | kg | 4.6 | |

597279 Infrared clinical thermometer CleanSwiss (non-contact)

CS-T01

This infrared clinical thermometer measures temperatures using **non-contact** technology, has a three-colour display mode and **takes measurements in only 0.5 seconds**. It is suitable for use on adults, children and infants.

- Starts up in a flash (in less than 2 seconds) and is easy to use
- Measures temperatures in only half a second, so also suitable for screening people entering a building, in public buildings, traffic etc.
- Switches off automatically when not in use to conserve battery life
- **Measuring distance: approx. 3-10 cm**
- Includes memory function for up to 50 groups, so that specific measured values can be retrieved later (e.g. group 1 = warehouse employees, group 2 = sales employees etc.)
- The clinical thermometer is battery-powered and requires 2x standard 1.5V alkaline (AAA) batteries (included!)
- Optional: Can also be operated with 2x NiMH (rechargeable batteries)



| Order ID | Colour |
|-------------|--------|
| 597279.0100 | White |

597520 Cordless drill/driver FEIN

Fein ASCM 18 QSW Top Deal Edition, uncompromising performance with 4-speed solid metal gearbox, brushless FEIN PowerDrive motor and QuickIN interface. Perfect for drilling and tapping up to 12 mm and drilling with HM hole saws. Powerful in 1st gear, e.g. for thread cutting. In 3rd /4th gear, ideal for drilling small diameters at high speeds. **Perfect flexibility with the FEIN MultiVolt interface: Machine can be operated with all FEIN Li-ion batteries (12 to 18 volts).** Solid metal QuickIN drill chuck with carbide-tipped clamping jaws and high clamping forces, electronic torque setting, battery charge level indicator can be read directly on the battery.



Scope of delivery:

597520.0100 1 lithium-ion battery 18 volts, 3.0 Ah, 1 lithium-ion battery 12 volts, 3.0 Ah, 1 quick charger ALG 50, QuickIN drill chuck (120 Nm), belt clip

Appropriate accessories:

565415 Batteries and chargers FEIN

| Order ID | | 597520.0100 |
|------------------------|-------------------|---|
| Type | | ASCM 18 QSW |
| Battery voltage | V | 12...18 |
| Battery capacity | Ah | 3.0 |
| Drill chucks | mm | 1.5...13 |
| Idle speed | min ⁻¹ | 0...400 / 0...700 / 0...1400 / 0...2500 |
| Torque max. | Nm | 40 |
| hard threaded fastener | Nm | 40 |
| Soft threaded fastener | Nm | 20 |
| for wood | mm | 40 |
| for steel | mm | 13 |
| Screw Ø max. | mm | 8 x 200 |
| for thread max. | | M 8 |
| Weight without battery | kg | 1.2 |

597530 Cordless drill/driver BOSCH

Bosch GSR 12V-15, practical, compact power pack. Shortest head length and low height for working in hard-to-reach places, powerful two-speed gearbox for screwdriving and drilling, 20 torque levels and drill setting, infinitely adjustable speed, motor brake, integrated LED light.

Scope of delivery:

597530.0100 Cordless drill/driver GSR 12V-15, 1 x 2.0 Ah Li-ion battery GBA 12V, 1 x 4.0 Ah Li-ion battery GBA 12V, charger AL 1115 CV, 25-piece bit set, 7-piece metal drill set, 7-piece wood drill set, tool bag



Appropriate accessories:

597999 36-month full service package BOSCH

| Order ID | | 597530.0100 |
|------------------------|-------------------|--------------------|
| Type | | GSR 12V-15 |
| Battery voltage | V | 12 |
| Battery capacity | Ah | 2.0 / 4.0 |
| Drill chucks | mm | 1...10 |
| Idle speed | min ⁻¹ | 0...350 / 0...1300 |
| hard threaded fastener | Nm | 30 |
| Soft threaded fastener | Nm | 15 |
| for wood | mm | 19 |
| for steel | mm | 10 |
| Screw Ø max. | mm | 7 |
| Dimensions | mm | 169 x 178 |
| Weight | kg | 0.95 |

597540 Cordless drill/driver BOSCH

Bosch GSR 18V-55: A robust, durable cordless drill/driver with 13-mm metal drill chuck and brushless motor. Full control thanks to KickBack Control with automatic switch-off if the drill/driver jams, as well as precision clutch. Bosch lithium-ion technology with Electronic Cell Protection protects against overloading, overheating and deep discharge. Comfortable soft grip makes for perfect handling and low user fatigue. Two-speed planetary gear, integrated LED light, clockwise/anti-clockwise rotation, battery charge indicator.



Scope of delivery:

597540.0100 Cordless drill/driver GSR 18V-55, 2 x 3.0 Ah lithium-ion batteries GBA 18V, quick charger GAL 18V-20, L-BOXX

Appropriate accessories:

597999 36-month full service package BOSCH

| Order ID | | 597540.0100 |
|------------------------|-------------------|--------------------|
| Type | | GSR 18V-55 |
| Battery voltage | V | 18 |
| Battery capacity | Ah | 3.0 |
| Drill chucks | mm | 1.5...13 |
| Idle speed | min ⁻¹ | 0...450 / 0...1750 |
| hard threaded fastener | Nm | 55 |
| Soft threaded fastener | Nm | 28 |
| for wood | mm | 35 |
| for steel | mm | 13 |
| Screw Ø max. | mm | 8 |
| Weight without battery | kg | 1 |

597550 Cordless tool set BOSCH

Bosch 12-volt Professional Set, practical set with three cordless tools, one battery-powered light and comprehensive accessories.

Designs / Scope of delivery:

Cordless drill/driver Bosch GSR 12V-15: Two-speed gearbox (0–350/0–1300 rpm), maximum drilling diameter 19 mm in wood, 10 mm in steel, maximum screw diameter 7 mm.

Cordless sabre saw Bosch GSA 12V-24: Stroke rate 0–3000 rpm, stroke length 14.5 mm, cutting depth in wood 65 mm, in metal profiles and pipes 50 mm.

Cordless jigsaw Bosch GST 12V-70: Stroke rate 1500–2800 rpm, stroke height 18 mm, slant cuts 0–45°, cutting depth in wood 70 mm, in aluminium 3 mm, in metal 3 mm.

Battery-powered lamp Bosch GLI 12V-80: Luminous flux 80 lumens, max. operating time 590 min/Ah.

in Bosch Professional toolbag made of robust nylon, 2 x 2.0-Ah lithium-ion batteries GBA 18V and quick charger GAL 12V-40

| Order ID | Type | Battery voltage V | Battery capacity Ah |
|-------------|-------------------|----------------------|------------------------|
| 597550.0100 | 12 Volt Profi-Set | 12 | 2.0 |



599079 Knitted cotton gloves SHOWA

310 GREEN



As pair, in seamless knit cotton with **natural latex coating**, back of hand uncoated, elasticized cuff, suitable for work requiring a very secure grip and excellent mechanical characteristics. **Coating thickness 0.7 mm.**



CE Category II
EN 388:2142

| Order ID | Size |
|-------------|------|
| 599079.0100 | S |
| 599079.0200 | M |
| 599079.0300 | L |
| 599079.0400 | XL |

599080 Knitted cotton-polyester gloves SHOWA

THERMO-GRIP



As pair, made from fleece-lined cotton/polyester fabric, with natural latex palm coating, color grey, **layer thickness 0.7 mm**, rough surface, elastic cuff.



CE Category II
EN 388:2241

| Order ID | Size |
|-------------|------|
| 599080.0100 | M |
| 599080.0200 | L |
| 599080.0300 | XL |

656159 Guide rail STIHL Carving E, 1/4" P

Special rail with stellite tip.

Three-piece carving rail with solid stellite tip and 30-cm cutting length. **For wood carvers**, professional tree climbers and tree surgeons for cutting very narrow radii with the tip of the rail. Extremely low-impact, lightweight and durable. Markings on the guide rail allow the exact position of the rail tip to be determined in the cut. **Groove width 1.1 mm, for slender saw chains 1/4" Picco Micro 3.**

Usable with:

- 656054 Cordless powersaw STIHL MSA 120 C-BQ Battery system AK
- 656056 Cordless powersaw STIHL MSA 140 C-BQ Battery system AK
- 656074 Cordless powersaw STIHL MSA 160 C-BQ Battery system AP
- 656076 Cordless powersaw STIHL MSA 200 C-BQ Battery system AP

| Order ID | Rail length cm |
|-------------|-------------------|
| 656159.0100 | 30 |



656173 Holster STIHL for wood cutters GTA 26

The holster allows you to carry the GTA 26 on your belt and provides quick access at work. The variable leg strap holds it in place on the thigh and ensures increased wearing comfort. The reinforced rear panel provides a high level of protection when inserting. The additional tab holds the GTA 26 firmly in the holster.

| | |
|-------------|--------------|
| Order ID | suitable for |
| 656173.0100 | GTA 26 |



865665 Cylindrical drill bush

Version B, short hardened and ground

DIN 179 B

Steel 62 HRC + 2

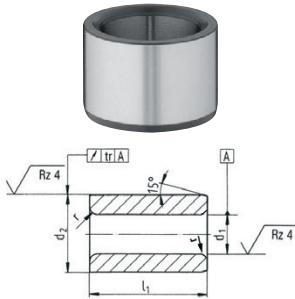
Cylindrical drill bushings come in two forms:

- Form A: Bore rounded at one end.
- Form B: Bore rounded at both ends

Tolerance:

Bore d1 = F7

Diameter d2 = n6



Other dimensions available upon request.

| Order ID | d1 mm | l1 mm | d2 mm | r mm | Order ID | d1 mm | l1 mm | d2 mm | r mm |
|-------------|----------|----------|----------|---------|-------------|----------|----------|----------|---------|
| 865665.0050 | 1.1 | 6 | 4 | 1.00 | 865665.0790 | 8.5 | 12 | 15 | 2.00 |
| 865665.0060 | 1.2 | 6 | 4 | 1.00 | 865665.0800 | 8.6 | 12 | 15 | 2.00 |
| 865665.0070 | 1.3 | 6 | 4 | 1.00 | 865665.0810 | 8.7 | 12 | 15 | 2.00 |
| 865665.0080 | 1.4 | 6 | 4 | 1.00 | 865665.0820 | 8.8 | 12 | 15 | 2.00 |
| 865665.0090 | 1.5 | 6 | 4 | 1.00 | 865665.0830 | 8.9 | 12 | 15 | 2.00 |
| 865665.0100 | 1.6 | 6 | 4 | 1.00 | 865665.0840 | 9.0 | 12 | 15 | 2.00 |
| 865665.0110 | 1.7 | 6 | 4 | 1.00 | 865665.0850 | 9.1 | 12 | 15 | 2.00 |
| 865665.0120 | 1.8 | 6 | 4 | 1.00 | 865665.0860 | 9.2 | 12 | 15 | 2.00 |
| 865665.0130 | 1.9 | 6 | 5 | 1.00 | 865665.0870 | 9.3 | 12 | 15 | 2.00 |
| 865665.0140 | 2.0 | 6 | 5 | 1.00 | 865665.0880 | 9.4 | 12 | 15 | 2.00 |
| 865665.0150 | 2.1 | 6 | 5 | 1.00 | 865665.0890 | 9.5 | 12 | 15 | 2.00 |
| 865665.0160 | 2.2 | 6 | 5 | 1.00 | 865665.0900 | 9.6 | 12 | 15 | 2.00 |
| 865665.0170 | 2.3 | 6 | 5 | 1.00 | 865665.0910 | 9.7 | 12 | 15 | 2.00 |
| 865665.0180 | 2.4 | 6 | 5 | 1.00 | 865665.0920 | 9.8 | 12 | 15 | 2.00 |
| 865665.0190 | 2.5 | 6 | 5 | 1.00 | 865665.0930 | 9.9 | 12 | 15 | 2.00 |
| 865665.0200 | 2.6 | 6 | 5 | 1.00 | 865665.0940 | 10.0 | 12 | 15 | 2.00 |
| 865665.0210 | 2.7 | 8 | 6 | 1.00 | 865665.0950 | 10.1 | 12 | 18 | 2.00 |
| 865665.0220 | 2.8 | 8 | 6 | 1.00 | 865665.0960 | 10.2 | 12 | 18 | 2.00 |
| 865665.0230 | 2.9 | 8 | 6 | 1.00 | 865665.0970 | 10.3 | 12 | 18 | 2.00 |
| 865665.0240 | 3.0 | 8 | 6 | 1.00 | 865665.0980 | 10.4 | 12 | 18 | 2.00 |
| 865665.0250 | 3.1 | 8 | 6 | 1.00 | 865665.0990 | 10.5 | 12 | 18 | 2.00 |
| 865665.0260 | 3.2 | 8 | 6 | 1.00 | 865665.1000 | 10.6 | 12 | 18 | 2.00 |
| 865665.0270 | 3.3 | 8 | 6 | 1.00 | 865665.1010 | 10.7 | 12 | 18 | 2.00 |
| 865665.0280 | 3.4 | 8 | 7 | 1.00 | 865665.1020 | 10.8 | 12 | 18 | 2.00 |
| 865665.0290 | 3.5 | 8 | 7 | 1.00 | 865665.1030 | 10.9 | 12 | 18 | 2.00 |
| 865665.0300 | 3.6 | 8 | 7 | 1.00 | 865665.1040 | 11.0 | 12 | 18 | 2.00 |
| 865665.0310 | 3.7 | 8 | 7 | 1.00 | 865665.1050 | 11.1 | 12 | 18 | 2.00 |
| 865665.0320 | 3.8 | 8 | 7 | 1.00 | 865665.1060 | 11.2 | 12 | 18 | 2.00 |
| 865665.0330 | 3.9 | 8 | 7 | 1.00 | 865665.1070 | 11.5 | 12 | 18 | 2.00 |
| 865665.0340 | 4.0 | 8 | 7 | 1.00 | 865665.1080 | 12.0 | 12 | 18 | 2.00 |
| 865665.0350 | 4.1 | 8 | 8 | 1.00 | 865665.1090 | 12.1 | 16 | 22 | 2.00 |
| 865665.0360 | 4.2 | 8 | 8 | 1.00 | 865665.1100 | 12.2 | 16 | 22 | 2.00 |
| 865665.0370 | 4.3 | 8 | 8 | 1.00 | 865665.1110 | 12.4 | 16 | 22 | 2.00 |
| 865665.0380 | 4.4 | 8 | 8 | 1.00 | 865665.1120 | 12.5 | 16 | 22 | 2.00 |
| 865665.0390 | 4.5 | 8 | 8 | 1.00 | 865665.1130 | 12.7 | 16 | 22 | 2.00 |
| 865665.0400 | 4.6 | 8 | 8 | 1.00 | 865665.1140 | 13.0 | 16 | 22 | 2.00 |
| 865665.0410 | 4.7 | 8 | 8 | 1.00 | 865665.1150 | 13.3 | 16 | 22 | 2.00 |
| 865665.0420 | 4.8 | 8 | 8 | 1.00 | 865665.1160 | 13.5 | 16 | 22 | 2.00 |
| 865665.0430 | 4.9 | 8 | 8 | 1.00 | 865665.1170 | 14.0 | 16 | 22 | 2.00 |
| 865665.0440 | 5.0 | 8 | 8 | 1.00 | 865665.1180 | 14.1 | 16 | 22 | 2.00 |
| 865665.0450 | 5.1 | 10 | 10 | 1.50 | 865665.1190 | 14.2 | 16 | 22 | 2.00 |
| 865665.0460 | 5.2 | 10 | 10 | 1.50 | 865665.1200 | 14.5 | 16 | 22 | 2.00 |
| 865665.0470 | 5.3 | 10 | 10 | 1.50 | 865665.1210 | 14.6 | 16 | 22 | 2.00 |
| 865665.0480 | 5.4 | 10 | 10 | 1.50 | 865665.1220 | 14.7 | 16 | 22 | 2.00 |
| 865665.0490 | 5.5 | 10 | 10 | 1.50 | 865665.1230 | 15.0 | 16 | 22 | 2.00 |
| 865665.0500 | 5.6 | 10 | 10 | 1.50 | 865665.1240 | 15.5 | 16 | 26 | 2.00 |
| 865665.0510 | 5.7 | 10 | 10 | 1.50 | 865665.1250 | 16.0 | 16 | 26 | 2.00 |
| 865665.0520 | 5.8 | 10 | 10 | 1.50 | 865665.1260 | 16.1 | 16 | 26 | 2.00 |
| 865665.0530 | 5.9 | 10 | 10 | 1.50 | 865665.1270 | 16.5 | 16 | 26 | 2.00 |
| 865665.0540 | 6.0 | 10 | 10 | 1.50 | 865665.1280 | 17.0 | 16 | 26 | 2.00 |
| 865665.0550 | 6.1 | 10 | 12 | 1.50 | 865665.1290 | 17.5 | 16 | 26 | 2.00 |
| 865665.0560 | 6.2 | 10 | 12 | 1.50 | 865665.1300 | 18.0 | 16 | 26 | 2.00 |
| 865665.0570 | 6.3 | 10 | 12 | 1.50 | 865665.1310 | 18.5 | 20 | 30 | 3.00 |
| 865665.0580 | 6.4 | 10 | 12 | 1.50 | 865665.1320 | 19.0 | 20 | 30 | 3.00 |
| 865665.0590 | 6.5 | 10 | 12 | 1.50 | 865665.1330 | 19.5 | 20 | 30 | 3.00 |
| 865665.0600 | 6.6 | 10 | 12 | 1.50 | 865665.1340 | 20.0 | 20 | 30 | 3.00 |
| 865665.0610 | 6.7 | 10 | 12 | 1.50 | 865665.1350 | 20.5 | 20 | 30 | 3.00 |
| 865665.0620 | 6.8 | 10 | 12 | 1.50 | 865665.1360 | 21.0 | 20 | 30 | 3.00 |
| 865665.0630 | 6.9 | 10 | 12 | 1.50 | 865665.1370 | 21.5 | 20 | 30 | 3.00 |
| 865665.0640 | 7.0 | 10 | 12 | 1.50 | 865665.1380 | 22.0 | 20 | 30 | 3.00 |
| 865665.0650 | 7.1 | 10 | 12 | 1.50 | 865665.1390 | 22.5 | 20 | 35 | 3.00 |
| 865665.0660 | 7.2 | 10 | 12 | 1.50 | 865665.1400 | 23.0 | 20 | 35 | 3.00 |
| 865665.0670 | 7.3 | 10 | 12 | 1.50 | 865665.1410 | 23.5 | 20 | 35 | 3.00 |
| 865665.0680 | 7.4 | 10 | 12 | 1.50 | 865665.1420 | 24.0 | 20 | 35 | 3.00 |
| 865665.0690 | 7.5 | 10 | 12 | 1.50 | 865665.1430 | 24.5 | 20 | 35 | 3.00 |
| 865665.0700 | 7.6 | 10 | 12 | 1.50 | 865665.1440 | 25.0 | 20 | 35 | 3.00 |
| 865665.0710 | 7.7 | 10 | 12 | 1.50 | 865665.1450 | 25.5 | 20 | 35 | 3.00 |
| 865665.0720 | 7.8 | 10 | 12 | 1.50 | 865665.1460 | 26.0 | 20 | 35 | 3.00 |
| 865665.0730 | 7.9 | 10 | 12 | 1.50 | 865665.1470 | 26.5 | 25 | 42 | 3.00 |
| 865665.0740 | 8.0 | 10 | 12 | 1.50 | 865665.1480 | 27.0 | 25 | 42 | 3.00 |
| 865665.0750 | 8.1 | 12 | 15 | 2.00 | 865665.1490 | 27.5 | 25 | 42 | 3.00 |
| 865665.0760 | 8.2 | 12 | 15 | 2.00 | 865665.1500 | 28.0 | 25 | 42 | 3.00 |
| 865665.0770 | 8.3 | 12 | 15 | 2.00 | 865665.1510 | 29.0 | 25 | 42 | 3.00 |
| 865665.0780 | 8.4 | 12 | 15 | 2.00 | 865665.1520 | 30.0 | 25 | 42 | 3.00 |

865670 Cylindrical drill bush

Version B, medium hardened and ground

DIN 179 B

Steel 62 HRC + 2

Cylindrical drill bushings come in two forms:

- Form A: Bore rounded at one end.
- Form B: Bore rounded at both ends

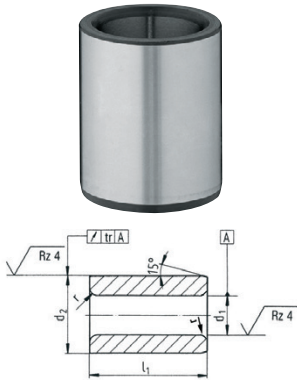
Tolerance:

Bore d1 = F7

Diameter d2 = n6

Other dimensions available upon request.

| Order ID | d1 mm | l1 mm | d2 mm | r mm | Order ID | d1 mm | l1 mm | d2 mm | r mm |
|-------------|----------|----------|----------|---------|-------------|----------|----------|----------|---------|
| 865670.0050 | 1.1 | 9 | 4 | 1.00 | 865670.0800 | 8.6 | 20 | 15 | 2.00 |
| 865670.0060 | 1.2 | 9 | 4 | 1.00 | 865670.0810 | 8.7 | 20 | 15 | 2.00 |
| 865670.0070 | 1.3 | 9 | 4 | 1.00 | 865670.0820 | 8.8 | 20 | 15 | 2.00 |
| 865670.0080 | 1.4 | 9 | 4 | 1.00 | 865670.0830 | 8.9 | 20 | 15 | 2.00 |
| 865670.0090 | 1.5 | 9 | 4 | 1.00 | 865670.0840 | 9.0 | 20 | 15 | 2.00 |
| 865670.0100 | 1.6 | 9 | 4 | 1.00 | 865670.0850 | 9.1 | 20 | 15 | 2.00 |
| 865670.0110 | 1.7 | 9 | 4 | 1.00 | 865670.0860 | 9.2 | 20 | 15 | 2.00 |
| 865670.0120 | 1.8 | 9 | 4 | 1.00 | 865670.0870 | 9.3 | 20 | 15 | 2.00 |
| 865670.0130 | 1.9 | 9 | 5 | 1.00 | 865670.0880 | 9.4 | 20 | 15 | 2.00 |
| 865670.0140 | 2.0 | 9 | 5 | 1.00 | 865670.0890 | 9.5 | 20 | 15 | 2.00 |
| 865670.0150 | 2.1 | 9 | 5 | 1.00 | 865670.0900 | 9.6 | 20 | 15 | 2.00 |
| 865670.0160 | 2.2 | 9 | 5 | 1.00 | 865670.0910 | 9.7 | 20 | 15 | 2.00 |
| 865670.0170 | 2.3 | 9 | 5 | 1.00 | 865670.0920 | 9.8 | 20 | 15 | 2.00 |
| 865670.0180 | 2.4 | 9 | 5 | 1.00 | 865670.0930 | 9.9 | 20 | 15 | 2.00 |
| 865670.0190 | 2.5 | 9 | 5 | 1.00 | 865670.0940 | 10.0 | 20 | 15 | 2.00 |
| 865670.0200 | 2.6 | 9 | 5 | 1.00 | 865670.0950 | 10.1 | 20 | 18 | 2.00 |
| 865670.0210 | 2.7 | 12 | 6 | 1.00 | 865670.0960 | 10.2 | 20 | 18 | 2.00 |
| 865670.0220 | 2.8 | 12 | 6 | 1.00 | 865670.0970 | 10.3 | 20 | 18 | 2.00 |
| 865670.0230 | 2.9 | 12 | 6 | 1.00 | 865670.0980 | 10.4 | 20 | 18 | 2.00 |
| 865670.0240 | 3.0 | 12 | 6 | 1.00 | 865670.0990 | 10.5 | 20 | 18 | 2.00 |
| 865670.0250 | 3.1 | 12 | 6 | 1.00 | 865670.1000 | 10.6 | 20 | 18 | 2.00 |
| 865670.0260 | 3.2 | 12 | 6 | 1.00 | 865670.1010 | 10.7 | 20 | 18 | 2.00 |
| 865670.0270 | 3.3 | 12 | 6 | 1.00 | 865670.1020 | 10.8 | 20 | 18 | 2.00 |
| 865670.0280 | 3.4 | 12 | 7 | 1.00 | 865670.1030 | 10.9 | 20 | 18 | 2.00 |
| 865670.0290 | 3.5 | 12 | 7 | 1.00 | 865670.1040 | 11.0 | 20 | 18 | 2.00 |
| 865670.0300 | 3.6 | 12 | 7 | 1.00 | 865670.1050 | 11.2 | 20 | 18 | 2.00 |
| 865670.0310 | 3.7 | 12 | 7 | 1.00 | 865670.1060 | 11.5 | 20 | 18 | 2.00 |
| 865670.0320 | 3.8 | 12 | 7 | 1.00 | 865670.1070 | 12.0 | 20 | 18 | 2.00 |
| 865670.0330 | 3.9 | 12 | 7 | 1.00 | 865670.1080 | 12.1 | 28 | 22 | 2.00 |
| 865670.0340 | 4.0 | 12 | 7 | 1.00 | 865670.1090 | 12.2 | 28 | 22 | 2.00 |
| 865670.0350 | 4.1 | 12 | 8 | 1.00 | 865670.1100 | 12.4 | 28 | 22 | 2.00 |
| 865670.0360 | 4.2 | 12 | 8 | 1.00 | 865670.1110 | 12.5 | 28 | 22 | 2.00 |
| 865670.0370 | 4.3 | 12 | 8 | 1.00 | 865670.1120 | 12.7 | 28 | 22 | 2.00 |
| 865670.0380 | 4.4 | 12 | 8 | 1.00 | 865670.1130 | 13.0 | 28 | 22 | 2.00 |
| 865670.0390 | 4.5 | 12 | 8 | 1.00 | 865670.1140 | 13.3 | 28 | 22 | 2.00 |
| 865670.0400 | 4.6 | 12 | 8 | 1.00 | 865670.1150 | 13.4 | 28 | 22 | 2.00 |
| 865670.0410 | 4.7 | 12 | 8 | 1.00 | 865670.1160 | 13.5 | 28 | 22 | 2.00 |
| 865670.0420 | 4.8 | 12 | 8 | 1.00 | 865670.1170 | 14.0 | 28 | 22 | 2.00 |
| 865670.0430 | 4.9 | 12 | 8 | 1.00 | 865670.1180 | 14.1 | 28 | 22 | 2.00 |
| 865670.0440 | 5.0 | 12 | 8 | 1.00 | 865670.1190 | 14.2 | 28 | 22 | 2.00 |
| 865670.0450 | 5.1 | 16 | 10 | 1.50 | 865670.1200 | 14.5 | 28 | 22 | 2.00 |
| 865670.0460 | 5.2 | 16 | 10 | 1.50 | 865670.1210 | 14.6 | 28 | 22 | 2.00 |
| 865670.0470 | 5.3 | 16 | 10 | 1.50 | 865670.1220 | 14.7 | 28 | 22 | 2.00 |
| 865670.0480 | 5.4 | 16 | 10 | 1.50 | 865670.1230 | 15.0 | 28 | 22 | 2.00 |
| 865670.0490 | 5.5 | 16 | 10 | 1.50 | 865670.1240 | 15.1 | 28 | 26 | 2.00 |
| 865670.0500 | 5.6 | 16 | 10 | 1.50 | 865670.1250 | 15.5 | 28 | 26 | 2.00 |
| 865670.0510 | 5.7 | 16 | 10 | 1.50 | 865670.1260 | 16.0 | 28 | 26 | 2.00 |
| 865670.0520 | 5.8 | 16 | 10 | 1.50 | 865670.1270 | 16.1 | 28 | 26 | 2.00 |
| 865670.0530 | 5.9 | 16 | 10 | 1.50 | 865670.1280 | 16.5 | 28 | 26 | 2.00 |
| 865670.0540 | 6.0 | 16 | 10 | 1.50 | 865670.1290 | 17.0 | 28 | 26 | 2.00 |
| 865670.0550 | 6.1 | 16 | 12 | 1.50 | 865670.1300 | 17.5 | 28 | 26 | 2.00 |
| 865670.0560 | 6.2 | 16 | 12 | 1.50 | 865670.1310 | 18.0 | 28 | 26 | 2.00 |
| 865670.0570 | 6.3 | 16 | 12 | 1.50 | 865670.1320 | 18.5 | 36 | 30 | 3.00 |
| 865670.0580 | 6.4 | 16 | 12 | 1.50 | 865670.1330 | 19.0 | 36 | 30 | 3.00 |
| 865670.0590 | 6.5 | 16 | 12 | 1.50 | 865670.1340 | 19.5 | 36 | 30 | 3.00 |
| 865670.0600 | 6.6 | 16 | 12 | 1.50 | 865670.1350 | 20.0 | 36 | 30 | 3.00 |
| 865670.0610 | 6.7 | 16 | 12 | 1.50 | 865670.1360 | 20.5 | 36 | 30 | 3.00 |
| 865670.0620 | 6.8 | 16 | 12 | 1.50 | 865670.1370 | 21.0 | 36 | 30 | 3.00 |
| 865670.0630 | 6.9 | 16 | 12 | 1.50 | 865670.1380 | 21.5 | 36 | 30 | 3.00 |
| 865670.0640 | 7.0 | 16 | 12 | 1.50 | 865670.1390 | 22.0 | 36 | 30 | 3.00 |
| 865670.0650 | 7.1 | 16 | 12 | 1.50 | 865670.1400 | 22.5 | 36 | 35 | 3.00 |
| 865670.0660 | 7.2 | 16 | 12 | 1.50 | 865670.1410 | 23.0 | 36 | 35 | 3.00 |
| 865670.0670 | 7.3 | 16 | 12 | 1.50 | 865670.1420 | 23.5 | 36 | 35 | 3.00 |
| 865670.0680 | 7.4 | 16 | 12 | 1.50 | 865670.1430 | 24.0 | 36 | 35 | 3.00 |
| 865670.0690 | 7.5 | 16 | 12 | 1.50 | 865670.1440 | 24.5 | 36 | 35 | 3.00 |
| 865670.0700 | 7.6 | 16 | 12 | 1.50 | 865670.1450 | 25.0 | 36 | 35 | 3.00 |
| 865670.0710 | 7.7 | 16 | 12 | 1.50 | 865670.1460 | 25.5 | 36 | 35 | 3.00 |
| 865670.0720 | 7.8 | 16 | 12 | 1.50 | 865670.1470 | 26.0 | 36 | 35 | 3.00 |
| 865670.0730 | 7.9 | 16 | 12 | 1.50 | 865670.1480 | 26.5 | 45 | 42 | 3.00 |
| 865670.0740 | 8.0 | 16 | 12 | 1.50 | 865670.1490 | 27.0 | 45 | 42 | 3.00 |
| 865670.0750 | 8.1 | 20 | 15 | 2.00 | 865670.1500 | 27.5 | 45 | 42 | 3.00 |
| 865670.0760 | 8.2 | 20 | 15 | 2.00 | 865670.1510 | 28.0 | 45 | 42 | 3.00 |
| 865670.0770 | 8.3 | 20 | 15 | 2.00 | 865670.1520 | 29.0 | 45 | 42 | 3.00 |
| 865670.0780 | 8.4 | 20 | 15 | 2.00 | | | | | |
| 865670.0790 | 8.5 | 20 | 15 | 2.00 | | | | | |



865675 Cylindrical drill bush

Version B, long hardened and ground

DIN 179 B

Steel 62 HRC + 2

Cylindrical drill bushings come in two forms:

- Form A: Bore rounded at one end.
- Form B: Bore rounded at both ends

Tolerance:

Bore d1 = F7

Diameter d2 = n6

Other dimensions available upon request.

| Order ID | d1 mm | l1 mm | d2 mm | r mm | Order ID | d1 mm | l1 mm | d2 mm | r mm |
|-------------|----------|----------|----------|---------|-------------|----------|----------|----------|---------|
| 865675.0050 | 2.7 | 16 | 6 | 1.00 | 865675.0700 | 9.2 | 25 | 15 | 2.00 |
| 865675.0060 | 2.8 | 16 | 6 | 1.00 | 865675.0710 | 9.3 | 25 | 15 | 2.00 |
| 865675.0070 | 2.9 | 16 | 6 | 1.00 | 865675.0720 | 9.4 | 25 | 15 | 2.00 |
| 865675.0080 | 3.0 | 16 | 6 | 1.00 | 865675.0730 | 9.5 | 25 | 15 | 2.00 |
| 865675.0090 | 3.1 | 16 | 6 | 1.00 | 865675.0740 | 9.6 | 25 | 15 | 2.00 |
| 865675.0100 | 3.2 | 16 | 6 | 1.00 | 865675.0750 | 9.7 | 25 | 15 | 2.00 |
| 865675.0110 | 3.3 | 16 | 6 | 1.00 | 865675.0760 | 9.8 | 25 | 15 | 2.00 |
| 865675.0120 | 3.4 | 16 | 7 | 1.00 | 865675.0770 | 9.9 | 25 | 15 | 2.00 |
| 865675.0130 | 3.5 | 16 | 7 | 1.00 | 865675.0780 | 10.0 | 25 | 15 | 2.00 |
| 865675.0140 | 3.6 | 16 | 7 | 1.00 | 865675.0790 | 10.1 | 25 | 18 | 2.00 |
| 865675.0150 | 3.7 | 16 | 7 | 1.00 | 865675.0800 | 10.2 | 25 | 18 | 2.00 |
| 865675.0160 | 3.8 | 16 | 7 | 1.00 | 865675.0810 | 10.3 | 25 | 18 | 2.00 |
| 865675.0170 | 3.9 | 16 | 7 | 1.00 | 865675.0820 | 10.4 | 25 | 18 | 2.00 |
| 865675.0180 | 4.0 | 16 | 7 | 1.00 | 865675.0830 | 10.5 | 25 | 18 | 2.00 |
| 865675.0190 | 4.1 | 16 | 8 | 1.00 | 865675.0840 | 10.6 | 25 | 18 | 2.00 |
| 865675.0200 | 4.2 | 16 | 8 | 1.00 | 865675.0850 | 10.7 | 25 | 18 | 2.00 |
| 865675.0210 | 4.3 | 16 | 8 | 1.00 | 865675.0860 | 10.8 | 25 | 18 | 2.00 |
| 865675.0220 | 4.4 | 16 | 8 | 1.00 | 865675.0870 | 10.9 | 25 | 18 | 2.00 |
| 865675.0230 | 4.5 | 16 | 8 | 1.00 | 865675.0880 | 11.0 | 25 | 18 | 2.00 |
| 865675.0240 | 4.6 | 16 | 8 | 1.00 | 865675.0890 | 11.1 | 25 | 18 | 2.00 |
| 865675.0250 | 4.7 | 16 | 8 | 1.00 | 865675.0900 | 11.2 | 25 | 18 | 2.00 |
| 865675.0260 | 4.8 | 16 | 8 | 1.00 | 865675.0910 | 11.5 | 25 | 18 | 2.00 |
| 865675.0270 | 4.9 | 16 | 8 | 1.00 | 865675.0920 | 12.0 | 25 | 18 | 2.00 |
| 865675.0280 | 5.0 | 16 | 8 | 1.00 | 865675.0930 | 12.1 | 36 | 22 | 2.00 |
| 865675.0290 | 5.1 | 20 | 10 | 1.50 | 865675.0940 | 12.2 | 36 | 22 | 2.00 |
| 865675.0300 | 5.2 | 20 | 10 | 1.50 | 865675.0950 | 12.4 | 36 | 22 | 2.00 |
| 865675.0310 | 5.3 | 20 | 10 | 1.50 | 865675.0960 | 12.5 | 36 | 22 | 2.00 |
| 865675.0320 | 5.4 | 20 | 10 | 1.50 | 865675.0970 | 12.7 | 36 | 22 | 2.00 |
| 865675.0330 | 5.5 | 20 | 10 | 1.50 | 865675.0980 | 13.0 | 36 | 22 | 2.00 |
| 865675.0340 | 5.6 | 20 | 10 | 1.50 | 865675.0990 | 13.3 | 36 | 22 | 2.00 |
| 865675.0350 | 5.7 | 20 | 10 | 1.50 | 865675.1000 | 13.5 | 36 | 22 | 2.00 |
| 865675.0360 | 5.8 | 20 | 10 | 1.50 | 865675.1010 | 14.0 | 36 | 22 | 2.00 |
| 865675.0370 | 5.9 | 20 | 10 | 1.50 | 865675.1020 | 14.1 | 36 | 22 | 2.00 |
| 865675.0380 | 6.0 | 20 | 10 | 1.50 | 865675.1030 | 14.5 | 36 | 22 | 2.00 |
| 865675.0390 | 6.1 | 20 | 12 | 1.50 | 865675.1040 | 14.6 | 36 | 22 | 2.00 |
| 865675.0400 | 6.2 | 20 | 12 | 1.50 | 865675.1050 | 14.7 | 36 | 22 | 2.00 |
| 865675.0410 | 6.3 | 20 | 12 | 1.50 | 865675.1060 | 15.0 | 36 | 22 | 2.00 |
| 865675.0420 | 6.4 | 20 | 12 | 1.50 | 865675.1070 | 15.5 | 36 | 26 | 2.00 |
| 865675.0430 | 6.5 | 20 | 12 | 1.50 | 865675.1080 | 16.0 | 36 | 26 | 2.00 |
| 865675.0440 | 6.6 | 20 | 12 | 1.50 | 865675.1090 | 16.1 | 36 | 26 | 2.00 |
| 865675.0450 | 6.7 | 20 | 12 | 1.50 | 865675.1100 | 16.5 | 36 | 26 | 2.00 |
| 865675.0460 | 6.8 | 20 | 12 | 1.50 | 865675.1110 | 17.0 | 36 | 26 | 2.00 |
| 865675.0470 | 6.9 | 20 | 12 | 1.50 | 865675.1120 | 17.5 | 36 | 26 | 2.00 |
| 865675.0480 | 7.0 | 20 | 12 | 1.50 | 865675.1130 | 18.0 | 36 | 26 | 2.00 |
| 865675.0490 | 7.1 | 20 | 12 | 1.50 | 865675.1140 | 18.5 | 45 | 30 | 3.00 |
| 865675.0500 | 7.2 | 20 | 12 | 1.50 | 865675.1150 | 19.0 | 45 | 30 | 3.00 |
| 865675.0510 | 7.3 | 20 | 12 | 1.50 | 865675.1160 | 19.5 | 45 | 30 | 3.00 |
| 865675.0520 | 7.4 | 20 | 12 | 1.50 | 865675.1170 | 20.0 | 45 | 30 | 3.00 |
| 865675.0530 | 7.5 | 20 | 12 | 1.50 | 865675.1180 | 21.0 | 45 | 30 | 3.00 |
| 865675.0540 | 7.6 | 20 | 12 | 1.50 | 865675.1190 | 21.5 | 45 | 30 | 3.00 |
| 865675.0550 | 7.7 | 20 | 12 | 1.50 | 865675.1200 | 22.0 | 45 | 30 | 3.00 |
| 865675.0560 | 7.8 | 20 | 12 | 1.50 | 865675.1210 | 22.5 | 45 | 35 | 3.00 |
| 865675.0570 | 7.9 | 20 | 12 | 1.50 | 865675.1220 | 23.0 | 45 | 35 | 3.00 |
| 865675.0580 | 8.0 | 20 | 12 | 1.50 | 865675.1230 | 23.5 | 45 | 35 | 3.00 |
| 865675.0590 | 8.1 | 25 | 15 | 2.00 | 865675.1240 | 24.0 | 45 | 35 | 3.00 |
| 865675.0600 | 8.2 | 25 | 15 | 2.00 | 865675.1250 | 24.5 | 45 | 35 | 3.00 |
| 865675.0610 | 8.3 | 25 | 15 | 2.00 | 865675.1260 | 25.0 | 45 | 35 | 3.00 |
| 865675.0620 | 8.4 | 25 | 15 | 2.00 | 865675.1270 | 25.5 | 45 | 35 | 3.00 |
| 865675.0630 | 8.5 | 25 | 15 | 2.00 | 865675.1280 | 26.0 | 45 | 35 | 3.00 |
| 865675.0640 | 8.6 | 25 | 15 | 2.00 | 865675.1290 | 26.5 | 56 | 42 | 3.00 |
| 865675.0650 | 8.7 | 25 | 15 | 2.00 | 865675.1300 | 27.0 | 56 | 42 | 3.00 |
| 865675.0660 | 8.8 | 25 | 15 | 2.00 | 865675.1310 | 27.5 | 56 | 42 | 3.00 |
| 865675.0670 | 8.9 | 25 | 15 | 2.00 | 865675.1320 | 28.0 | 56 | 42 | 3.00 |
| 865675.0680 | 9.0 | 25 | 15 | 2.00 | 865675.1330 | 30.0 | 56 | 42 | 3.00 |
| 865675.0690 | 9.1 | 25 | 15 | 2.00 | | | | | |

