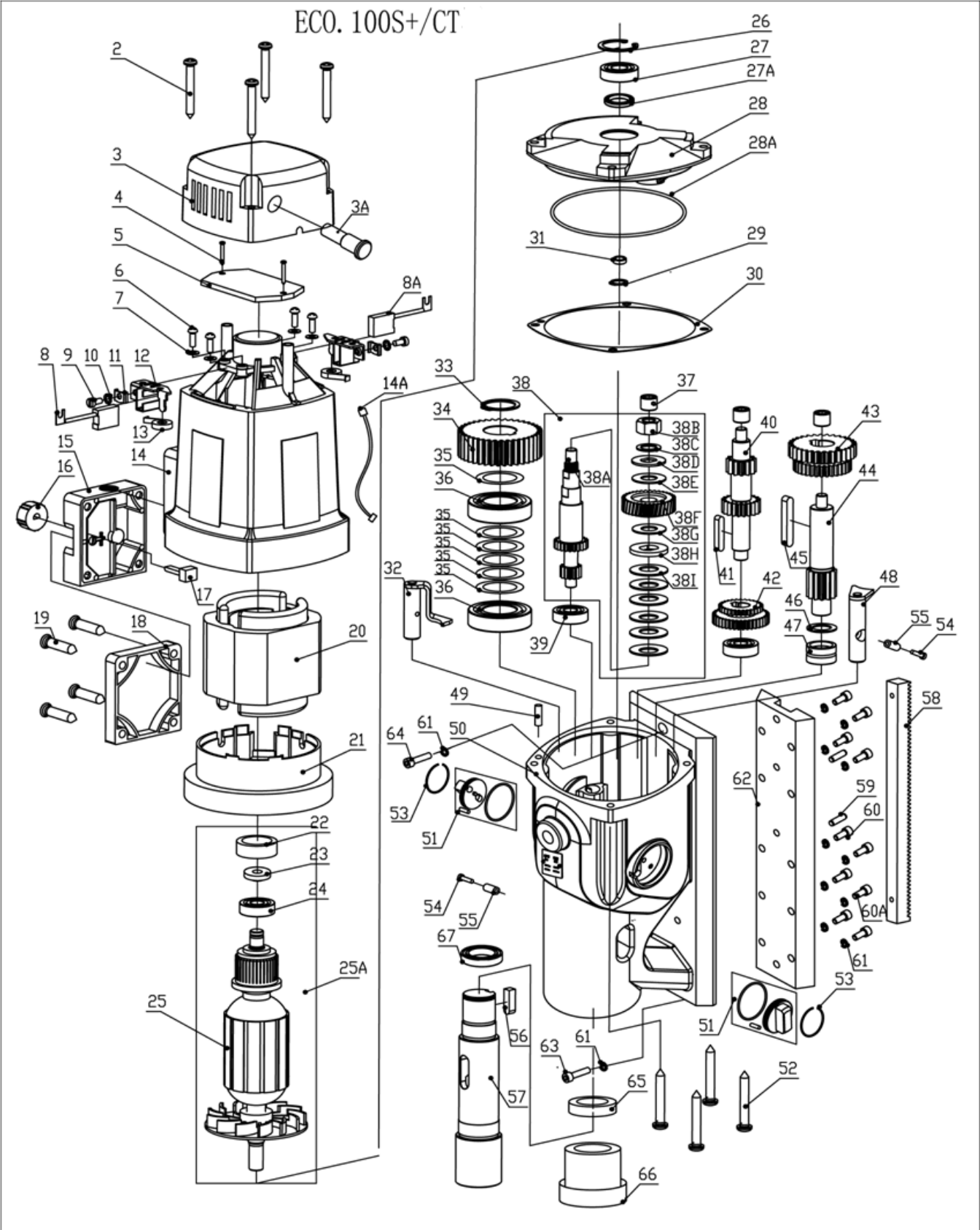
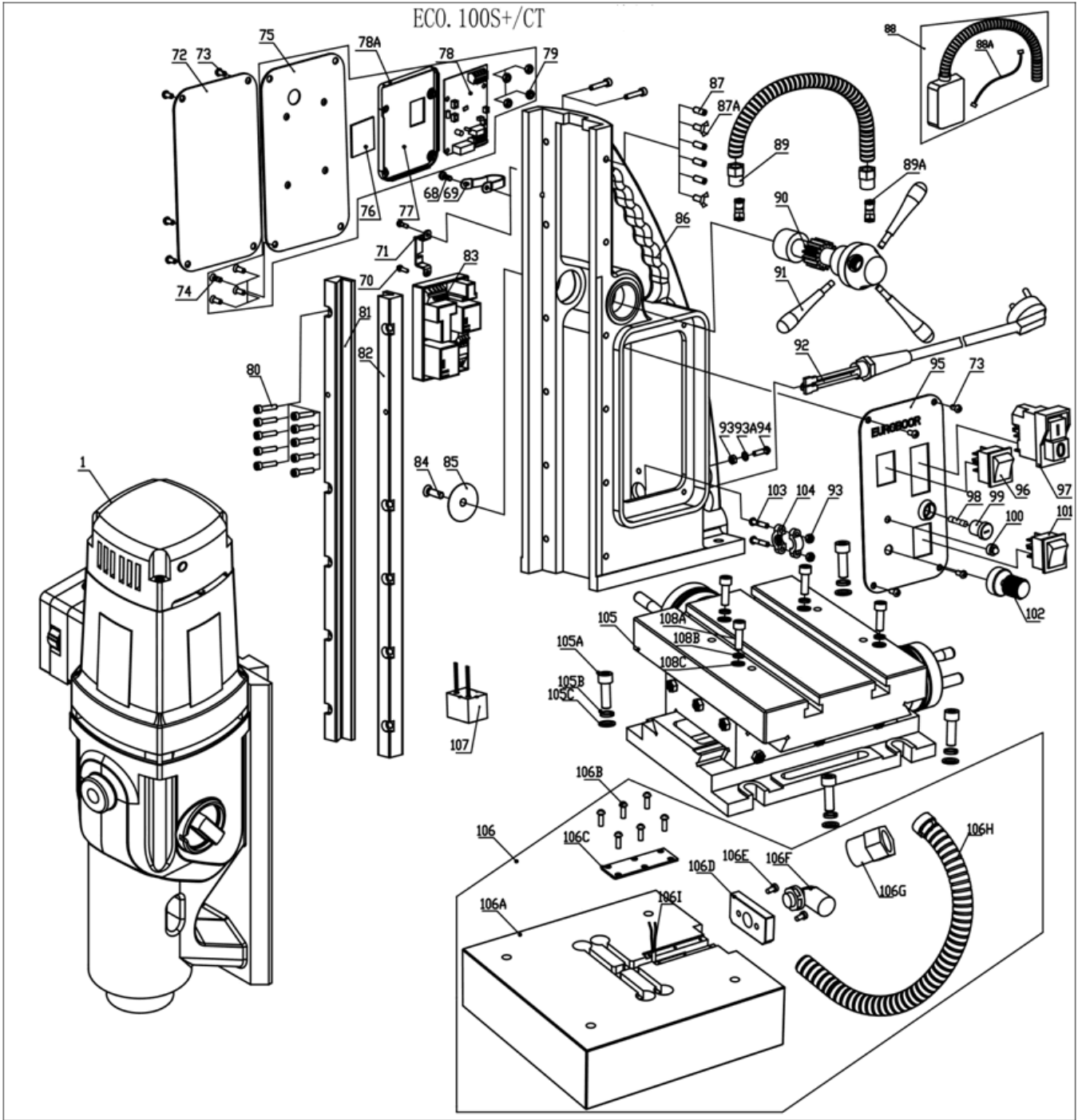


8. Exploded views & spare parts list

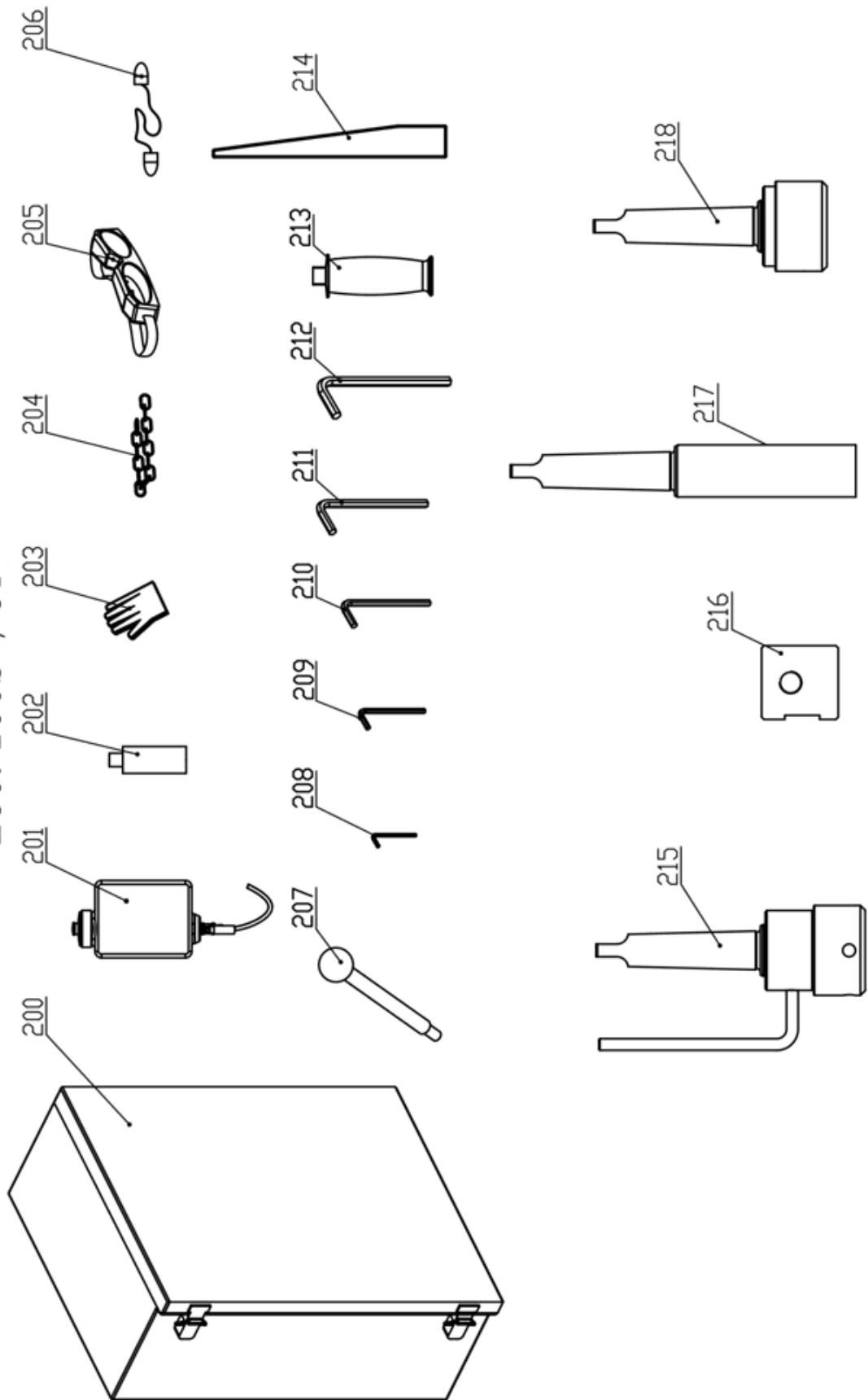
8.1 Exploded views



ECO. 100S+/CT



ECO. 100S+/CT



8.2 Sparepart lists

ECO.100S+/T

No.	Part no.	Description	Qty
1	100S.1001	Motor 220V ECO.100S+	1
	100S.1001A	Motor 110V ECO.100S+	
2	050.0106	Screw 4.8 x 45	4
3	100.0322Z	End cover	1
3A	P020.0278	LED red alarm 220V	1
	P020.0278A	LED red alarm 110V	
4	032.0116	Screw M4 x 16	2
5	100.4006	Control unit top ECO.100 110V/220V	1
6	100.0372	Carbon brush holder assembly	2
7			
9			
10			
11			
12			
13			
8(A)	Carbon.100+	Carbon brush set 220V	1
	Carbon.100A+	Carbon brush set 110V	
14	100.4388	Housing	1
14A	CS100.0342/2	Cable set 1608 ->	1
15	100.4576	Torque switch housing	1
16	100.4574	Wheel red	1
17	100.4573	Torque potentiometer 1 K	1
18	100.0611	T/S switch cap V1 - V3	1
19	100.0617	Screw PKVZ 6 x 45	4
20	100.1004-CK-1	Field 220V	1
	100.1004A-CK-1	Field 110V	
21	100.0391	Baffle	1
22	100.0346	Rubber fitting ring	1
23	100.0348	Armature speed disk 1800W/1900W	1
24	080.0351	Bearing 6000	1
25A	100S.1011	Armature set 220V	1
	100S.1012	Armature set 110V	
26	032.0166	Circlip 472/28/1.2	1
27	050.9070	Bearing 6001V V	1
27A	100S.0064	Bearing 15 x 23 x 3	1
28	100S.0401X	Inner gear plate	1
28A	100S.0071	O-ring 106 x 1.8	1
29	100.0571	Circlip 471 11 x 1	1
30	100.0458	Gasket big	1
31	130.0065	Ring metal	1
32	100S.1006	Clutch shaft	1
33	100.0426	Circlip 471 24 x 1.2	1
34	080.4324	Spindle gear 38T	1
35	080.4411	Adapter ring	6
36	100.0446	Bearing 6005	2
37	040.0161	Needle bearing HK0810	3

No.	Part no.	Description	Qty
38	100.4312	Friction clutch complete assembly(7T)	1
38A	080.4321	Axle 1 (ECO.80 -> 1412)	1
38B	100.4350	Nut M10	1
38C	100.4351	Washer 12 x 18 x 1	1
38D	100.4338	Friction lock disk 1	1
38E	100.4340	Brass disk 1	1
38F	100.4344	First gear 36T	1
38G	100.4349	Brass disk 2	1
38H	100.4353	Friction lock disk 2	1
38I	100.4352	Tension shell 28	6
39	080.0506	Bearing	2
40	100.4321	Axle 1 28+13T	1
41	040.0301	Key	1
42	100.4491	Double gear 1 25T+39T	1
43	100.4320	Double gear 2 36T+41T	1
44	100.4334	Axle 3 (13T)	1
45	080.0526	Key 3	1
46	080.4486	Washer 14 x 22 x 1	1
47	080.0481	Needle bearing	1
48	100S.1007	Clutch shaft	1
49	100.0549	Casing pin	1
50	100S.1017	Gear box	1
51	100S.1014	Gear switch	2
52	100.0459	Screw BK 5.5 x 45	4
53	050.0078	Ring 41.5 x 36.5 x 1.5	2
54	020.0329	Screw M4 x 16	2
55	050.0082	Screw holder	2
56	080.0431	Key spindle 6 x 6 x 20	1
57	100.0901	Spindle drive shaft	1
58	100S.0076	Rack 1.5 x 58T	1
59	020.0003	Pin	2
60	020.0106	Screw M6 x 14	8
60A	360.1025	Bolt M6 x 14	2
61	020.0111	Washer M6 DIN7980	12
62	100S.0462X	Slide	1
63	020.0146B	Screw M6 x 35	1
64	020.0146	Screw M6 x 25	1
65	100S.0067	Wool felt ring	1
66	100S.0066	Bearing NKX-45	1
67	100S.0065	Bearing 35 x 42 x 8	1
68	KSP.MS	Screw M5 x 10	1
69	020.0298	Motor cable clamp	1
70	KSP.MS	Screw M5 x 10	2
71	KSP.M/3	Tank holder	1
72	080.0016BX.5A	Rear panel 220V	1
	080.0016AX.2A	Rear panel 110V	

No.	Part no.	Description	Qty
73	020.0101	Panel screw BKVZ M4 x 8	8
78A	100.1028	Speed control unit 220V	1
	100.1028A	Speed control unit 110V	
80	100.0022	Bolt M5 x 20	12
81	100.0193A	Aluminium rail (L) 22 x 18.5 x 442.5	1
82	100.0193B	Aluminium rail (R) 22 x 18.5 x 442.5	1
83	100.4002	Control unit 2 ECO.100 220V 1501>	1
58	100.0003	Control unit 110V 1800W	1
84	020.0081	End screw BKVZ M6x16	1
85	020.0077H	End plate black	1
86	100SCT.1002	Frame	1
87	020.0516	Screw M5 x 10	6
87A	020.0386	Stop screw	2
88	100.4610	Motor cable completeV6	1
88A	CS100.0341/2	Cable set 1608 ->	1
89	020.0032	Adapter PG9 - PG11	2
89A	020.0033	Coupling nut PG11	2
90	100.0101H	Capstan hub black	1
91	020.0314X	Arm for capstan	3
92	100.1016	Main cable 220V EU	1
	020.0036/AU	Main cable 220V AU	
	020.0036/UK	Main cable 220V UK	
	020.0036/UK 110-32A	Main cable 110V UK 32A	
	100.1016A	Main cable 110V USA	
	020.0031	Coupling nut PG11 (main cable)	1
93	020.0182	Grounding screw/washer/nut	1
93A			
94			
95	100SCT.0008X	Front panel	1
96	100.0152	R/L switch(push)	1
97	030E.0091/Y	Motor switch 220V (5-pin) YELLOW	1
	030E.0092/Y	Motor switch 110V (5-pin) YELLOW	
98	020.0017	Fuse 5 x 20 F2A	1
99	020.0016	Fuse holder	1
100	020.0206	LED indicator set	1
101	020.0011/1	Magnet switch	1
102	100.1009	Potentiometer	1
93	020.0037	Cable clamp complete	1
103			
104			
105	100SCT.0001	Cross slide table	1
105A	020.0139	Screw	4

No.	Part no.	Description	Qty
105B	B60.0030	Washer M10	4
105C	B60.0042	Washer M10	4
106	100SCT.1004	Magnet complete 220v	1
	100SCT.1004A	Magnet complete 110v	
106A	020.0123	Magnet	1
106B	020.0122	Screw M3 x 8	6
106C	020.0129	Magnet cover	1
106D	020.0124	Adapter	1
106E	020.0074	Screw M5 x 12	2
106F	030.0021	Coupling nut PG9(elbow)	1
106G	020.0046	Coupling nut PG9	1
106H	020.0041	Bellows AD13	1
106I	020.0261	Reed switch	1
107	100.1010	Filter	1
108A	100A.0014	Screw M8x25	4
108B	020.0305	Washer M8	4
108C	100A.0015	Washer M8	
200	100SCT.1005	Case	1
201	100S.2019	Coolant tank	1
202	IBO.0.2L	Bottle 0.2LTR	1
203	PRM.61	EUROBOOR gloves M	1
	PRM.62	EUROBOOR gloves L	
	PRM.63	EUROBOOR gloves XL	
204	SAF.400	Safety chain (1 mtr) with lock	1
205	SAF.100	Safety goggles	1
206	SAF.200	Ear plugs	1
207	KSP.P	Pin and knob for cooling tank	1
208	IMB.US2.5	Allen key 2.5 mm	1
209	IMB.US4	Allen key 4.0 mm	1
210	IMB.US5	Allen key 5.0 mm	1
211	IMB.US6	Allen key 6.0 mm	1
212	IMB.US8	Allen key 8.0 mm	1
213	100S.0002	Side handle M12	1
214	DRIFT3	Drift MT3	1
215	080.2009	Spindle MT3 31.75 mm Weldon (1 1/4")	1
216	IBK.3219	Reducing ring Weldon 31.75mm – 19.05mm	1
217	IBK.MC3-L121	Extension MT3	1
218	MC3-ER32	MT3 Milling chuck(optional)	1